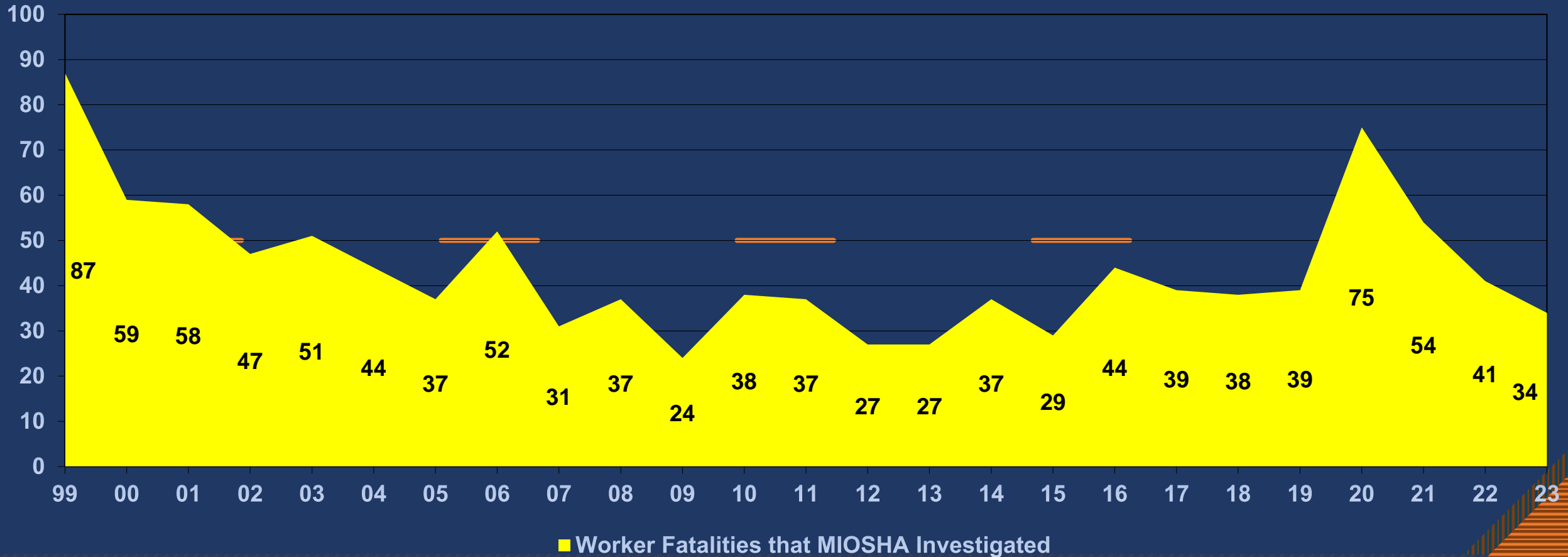


# 2022 Michigan Workplace Fatalities

MIOSHA Consultation, Education and Training Division



# MIOSHA Program-Related Fatalities



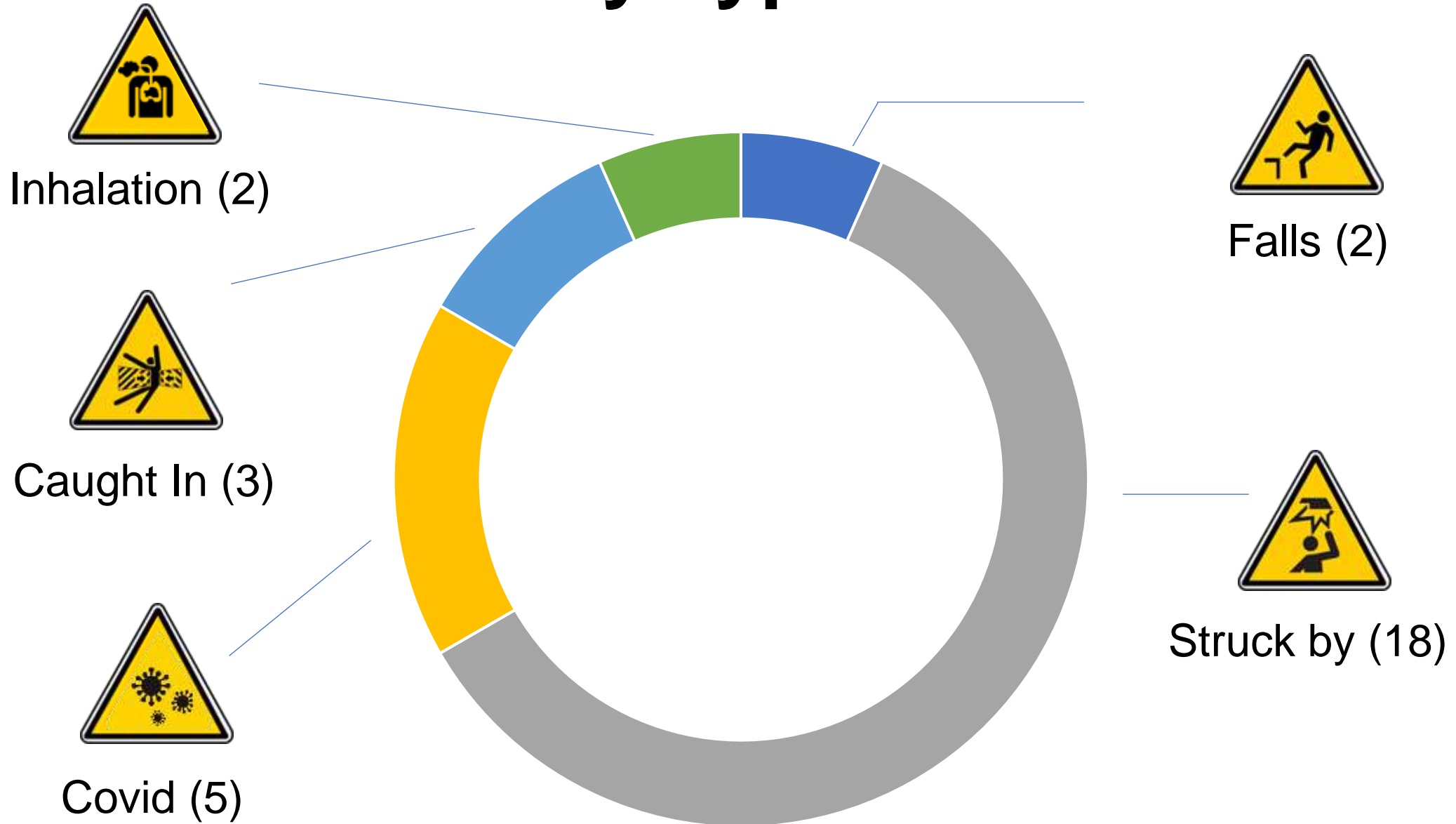
# General Industry Fatalities



*“that happens someplace else”*



# Fatality Types 2022



# Caught In January 17, 2022 Baraga County

Two employees were replacing a hydraulic hose on the Komatsu Wheel Loader. They had raised the boom to access the hydraulic hose and valve bank. One of the employees stepped away for 10 minutes. A maintenance worker went to assist and found the employee trapped behind the boom of the Komatsu.



# Citations

- 1910.147(c)(4)(i): GI PART 85, THE CONTROL OF HAZARDOUS ENERGY SOURCES (LOCKOUT/TAGOUT)  
Procedures shall be developed, documented and utilized for the control of potentially hazardous energy when employees are engaged in the activities covered by this section.
- 1910.147(c)(6)(i): GI PART 85, THE CONTROL OF HAZARDOUS ENERGY SOURCES (LOCKOUT/TAGOUT)  
The employer shall conduct a periodic inspection of the energy control procedure at least annually to ensure that the procedure and the requirements of this standard are being followed.



OPEN

Inhalation  
February 25, 2022  
Genesee County

An employee was removing a universal joint from a drive shaft, when a fire erupted. The employee was killed due to asphyxiation and smoke inhalation.

OPEN

## Citations

- 408.10631(3): GI PART 6. FIRE EXITS

The ceiling of an exit route shall be at least 7 feet 6 inches (2.3 m) high.

- 408.10632(2): GI PART 6, FIRE EXITS

A lock, fastening device or barrier shall not be installed or used on a means of egress in a manner that will prevent or hinder

- 408.10634(2): GI PART 6, FIRE EXITS

Where the contents of a building are classified as high hazard, there shall be not less than 2 exits which are accessible in different directions.

- 408.11261(1): GI PART 12, WELDING AND CUTTING

Cutting and welding shall be done in designated areas free of flammable or conditions favorable to fire or explosion.

- 408.17223(4): GI PART 72, AUTOMOTIVE SERVICE OPERATIONS

After a vehicle is serviced, tools, loose parts, materials and general debris shall be cleaned up and placed in their designated areas.

- 408.22139(1): ADM PART 11, RECORDING AND REPORTING OF OCCUPATIONAL INJURIES AND ILLNESSES

Fatalities. Within 8 hours after the death of any employee from a work-related incident, you must report the fatality by telephone to the MIOSHA toll-free central telephone number: 1-800-858-0397.

# Struck By March 4, 2022 Ottawa County

A 56 year old truck driver was unloaded trusses at a construction site. The truck bed was tilted up to unload the trusses to the ground. A bundle of trusses fell and crushed the driver.



# Citations

- No Citations
- Recommendation – remove from the company procedures to un/chock the wheels on the trailer while the trailer is tilted or before the trusses are completely unloaded off the trailer.

Inhalation  
March 29, 2022  
Muskegon  
County

A 60 year old business owner was 60 feet up in a tree and trimming branches with a chain saw. He accidentally cut his climbing rope and fell to the ground. He was not using a buckstrap.



# Citations

- No Citations



# Struck By January 16, 2022 Sanilac County

A 38 year old employee was walking down a driveway at night. A front end loader was delivering feed to a bunker with the bucket raised, partially obstructing the operators forward vision. The operator struck the employee, killing him.



# Citations

- 1928.51(d): AG PART 51, AGRICULTURAL TRACTORS [REF 408.45101]

Every employee who operates an agricultural tractor shall be informed of the operating practices contained in Appendix A of this part and of any other practices dictated by the work environment. Such information shall be provided at the time of initial assignment and at least annually thereafter.

# Struck By May 27, 2022 Dickinson County

Employee was observing a late-model race as a flagman at the pit exit of the track. Two race cars bumped into each other, causing one car to lose control. The car left the track surface and crossed the pit row exit, striking the employee. Employee flew through the air and into the tire barrier.



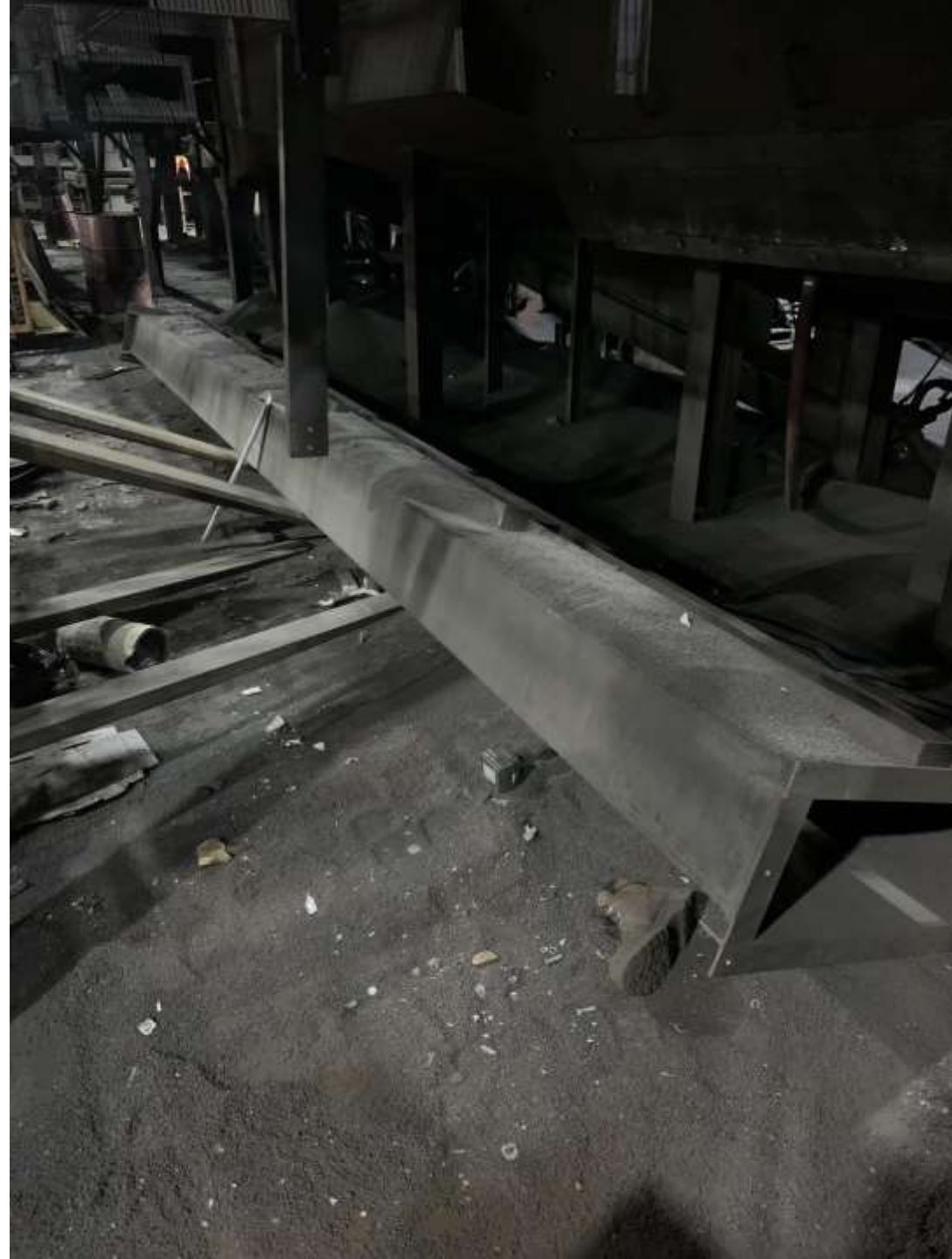
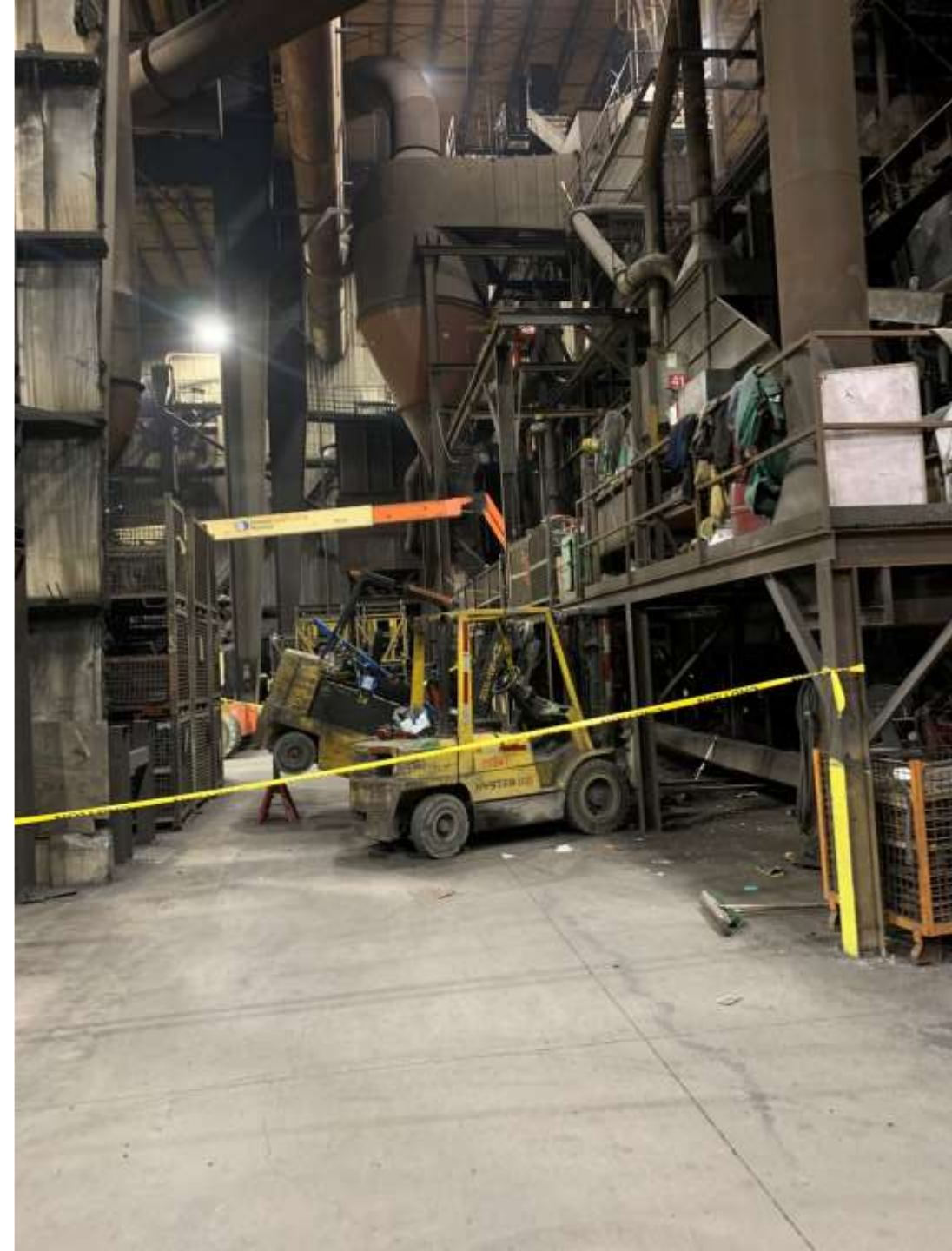
# Citations

- 408.1011(a): ACT 154, MICHIGAN OCCUPATIONAL SAFETY AND HEALTH ACT

An employer shall furnish to each employee, employment and a place of employment that is free from recognized hazards that are causing, or are likely to cause, death or serious physical harm to the employee.

# Struck By June 24, 2022 Huron County

Foundry employees were using a powered industrial truck with 10 foot extensions to remove a clean air duct that had been filled up with back shot. Upon removal of the bolts holding the duct in place, the powered industrial truck tipped forward and the duct fell on the worker.





# Citations

- 408.10034(12): GI PART 1, GENERAL PROVISIONS

An employee shall not place his/her body beneath equipment, such as vehicles, machines, or materials, supported only by a jack, overhead hoist, chain fall, or any other temporary single supporting means, unless safety stands, blocks or other support system capable of supporting the total imposed weight is used to protect the employee in case of failure of the supporting system.
- 408.12132(3): GI PART 21, POWERED INDUSTRIAL TRUCKS

If the truck is equipped with front end attachments, the name plate shall be marked to show all of the following:

  - (a) Identification of the attachments.
  - (b) The approximate weight of the truck and attachment.
  - (c) The load capacity of the truck and attachment combination at maximum elevation of the load engaging means with load laterally centered.
- 408.12152(1): GI PART 21, POWERED INDUSTRIAL TRUCKS

An employer shall provide training to the employee before the employee's assignment as an operator of a powered industrial truck. Instruction shall include all of the following: (a) Capacities of the equipment and attachments. (b) Purpose, use, and limitations of controls. (c) How to make daily checks. (d) Practice and operating assigned vehicles

# Struck By June 30, 2022 Wayne County

Three employees were attempting to install a new conveyor assembly. They used a PIT to lift the motor assembly and it fell off the forks and landed on the employee, crushing him.



# Citations

- 408.12193(e): GI PART 21, POWERED INDUSTRIAL TRUCKS  
Lift or transport only a load that cannot fall out of a basket or container, or off the load engaging means during the normal movements of the truck.

OPEN

Struck By  
July 7, 2022  
Newago County

A 58-year-old mechanic was performing maintenance on a conveyor system when it began moving and the employee was struck by and became caught in the system.



Photo courtesy of wzzm13.com

OPEN

## Citations

- 1910.147(c)(4)(ii): GI PART 85, THE CONTROL OF HAZARDOUS ENERGY SOURCES

The procedures shall clearly and specifically outline the scope, purpose, authorization, rules, and techniques to be utilized for the control of hazardous energy, and the means to enforce compliance including, but not limited to, the following...

- 1910.147(c)(7)(i): GI PART 85, THE CONTROL OF HAZARDOUS ENERGY SOURCES

The employer shall provide training to ensure that the purpose and function of the energy control program are understood by employees and that the knowledge and skills required for the safe application, usage, and removal of the energy controls are acquired by employees. The training shall include the following:

# Struck By July 14, 2022 Oakland County

Employee was removing and repairing a wheel on a woodchipper. While the employee was laying underneath the woodchipper, the woodchipper slid off the bottle jack and fell onto the employee pinning the employee to the ground.





# Citations

- 408.10034(12): GI PART 1, GENERAL PROVISIONS

An employee shall not place his/her body beneath equipment, such as vehicles, machines, or materials, supported only by a jack, overhead hoist, chain fall, or any other temporary single supporting means, unless safety stands, blocks or other support system capable of supporting the total imposed weight is used to protect the employee in case of failure of the supporting system.

- 408.13838(2): GI PART 38, HAND AND PORTABLE POWERED TOOLS

A jack shall be set on or against a firm foundation or blocking. If a jack, at the point of contact with the load, can slip, a wood block or nonslip device shall be placed between the cap and the load.

- 408.13838(4): GI PART 38, HAND AND PORTABLE POWERED TOOLS

After a load has been raised or moved by a jack, it shall be secured by cribbing, blocks or stands before work is started under or between the supported load.

# Struck By July 20, 2022 Berrien County

A County employee was trimming off the limbs of a tree that had fallen on the roadway. A car drove into the warning cone, through the downed branches and limbs, and struck the employee.



# Citations

- No Citations

Safety recommendations: Have two employees respond to the scene of an incident/emergency call for a fallen tree/branches.

Evaluate the scene to determine if it will take 20 minutes or less to clear the branches/tree.

If 20 minutes or less, block the lane(s) of traffic with a work truck using the strobe lights, and clear the branches/tree to open a lane for traffic.

If over 20 minutes, block the lane(s) of traffic with a work truck using the strobe lights, and wait in the trucks until additional crew members arrive.

# Struck By March 20, 2022 Wayne County

Employee was overseeing patients outside at the clinic and had a confrontation with a person near the facility. The person shot the employee. The employee died due to injuries sustained.



# Citations

- 408.1011(a): ACT 154, MICHIGAN OCCUPATIONAL SAFETY AND HEALTH ACT – No workplace violence program
- 408.22139(1): ADM PART 11, RECORDING AND REPORTING OF OCCUPATIONAL INJURIES AND ILLNESSES

Fatalities. Within 8 hours after the death of any employee from a work-related incident, you must report the fatality by telephone to the MIOSHA toll-free central telephone number: 1-800-858-0397.



Struck By  
July 27, 2022  
Chesaning  
County

An 18 year old was driving a John Deere Gator on M-27 and stopped at an intersection. A Buick Lucerne failed to yield and struck the back of the Gator, fatally injuring the employee.



# Citations

- 408.1011(a): ACT 154, MICHIGAN OCCUPATIONAL SAFETY AND HEALTH ACT – ORV on a state trunkline right-of-way
- 408.1011(a): ACT 154, MICHIGAN OCCUPATIONAL SAFETY AND HEALTH ACT – Seatbelts not used or enforced.

# Struck By August 5, 2022 Macomb County

A janitorial cleaning service contractor was standing near a double stack bale of cardboard talking to a coworker on a fork truck. As the fork truck drove away, the top bale of cardboard fell onto the worker.

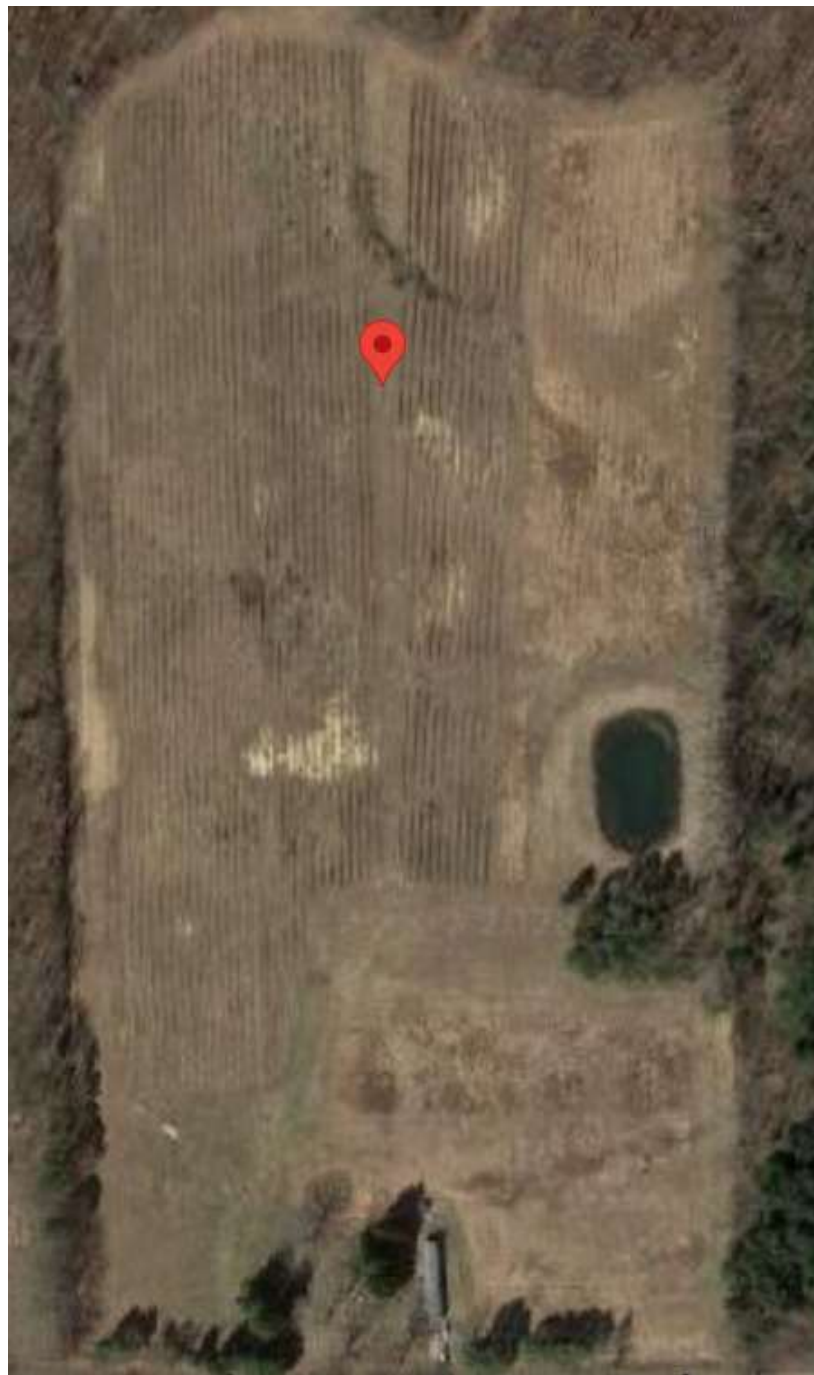


# Citations

- 408.10015(1): GI PART 1, GENERAL PROVISIONS  
Materials, including scrap and debris, shall be piled, stacked, or placed in a container in a manner that does not create a hazard to an employee.

Struck By  
July 21, 2023  
Van Buren  
County

- Victim was performing agriculturally-related hand-labor operations in a blueberry field and was waiting for his tote of picked berries to be weighed. An approximately 40' tall dead tree located within in a nearby wooded area fell, striking the individual in the head while he was standing in the field.





# Citations

- 408.22139(1): ADM PART 11, RECORDING AND REPORTING OF OCCUPATIONAL INJURIES AND ILLNESSES

Fatalities. Within 8 hours after the death of any employee from a work-related incident, you must report the fatality.

OPEN

Struck By  
August 22, 2023  
Livingston  
County

A 31-year-old shipping/receiving handler was moving pallets in a warehouse using a Hilo. The pallets contained nylon sacks of plastic pellets weighing approximately 2,200-2,300 pounds. Coworkers later discovered the employee unresponsive on the ground, with one of the nylon sacks on top of them.



OPEN

## Citations

- 408.10011:GI PART 1, GENERAL PROVISIONS

An employer shall comply with all of the following:

(a) Provide training to each newly assigned employee regarding the operating procedures, hazards, and safeguards of the job.

- 408.10015(1): GI PART 1, GENERAL PROVISIONS

Materials, including scrap and debris, shall be piled, stacked, or placed in a container in a manner that does not create a hazard to an employee.

OPEN

# Struck By September 6, 2022 Oakland County

An employee working for a restaurant was making a pizza delivery when the person who ordered the pizza allegedly robbed him or attempted to rob him. The perpetrator shot the employee in the back and killed him.



**CLICK ON  
DETROIT**

# PIZZA DELIVERY DRIVER KILLED AT VACANT HOME

DETROIT'S WEST SIDE

**LOCAL  
4+**

**SUBSCRIBE**

OPEN

## Citations

- 408.22139(1): ADM PART 11, RECORDING AND REPORTING OF OCCUPATIONAL INJURIES AND ILLNESSES

Fatalities. Within 8 hours after the death of any employee from a work-related incident, you must report the fatality by telephone to the MIOSHA toll-free central telephone number: 1-800-858-0397.

# Struck By September 9, 2022 Oceana County

- Several workers were riding on a trailer wagon being pulled by a tractor on a roadway. The driver swerved to avoid a mailbox, and a tire hit a small pothole. A worker fell off the trailer and was struck by a trailer tire, fatally injuring him.





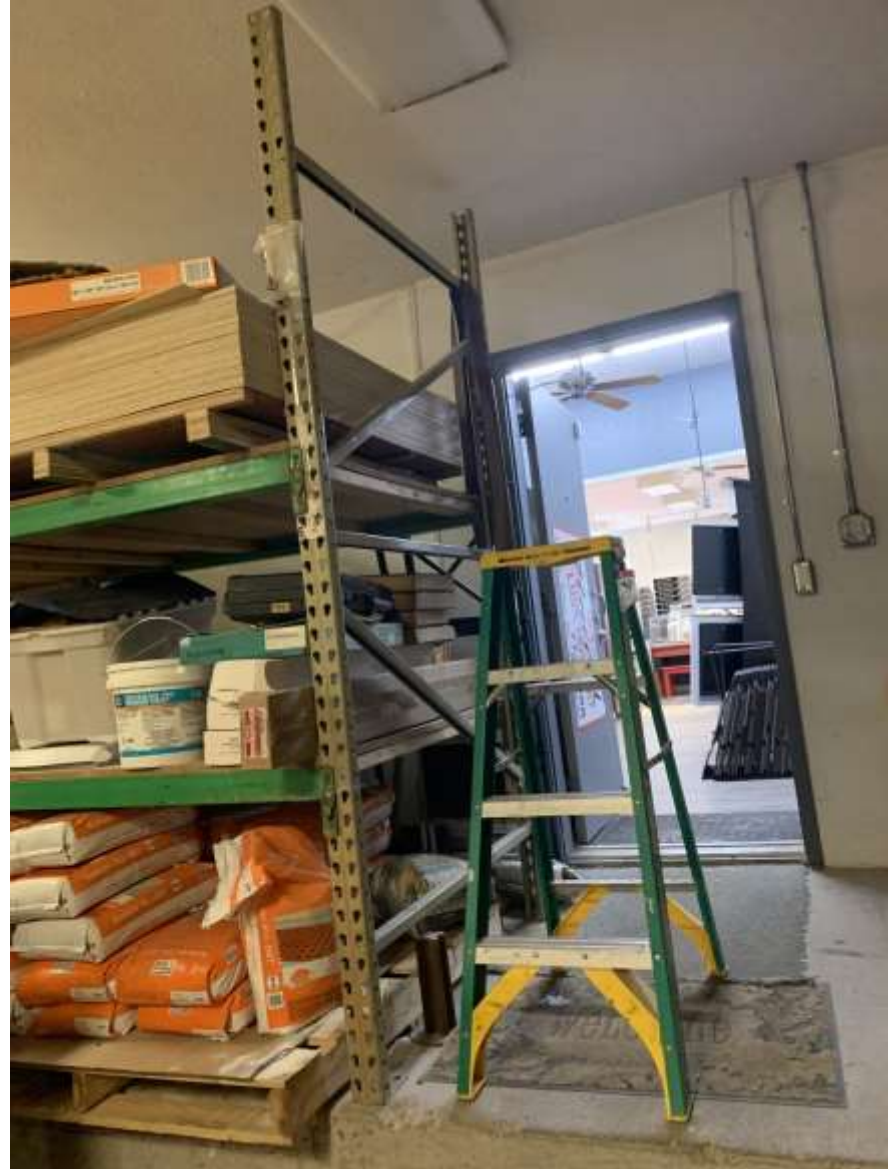
# Citations

- 1928.57(a)(6): AG PART 53, FARM FIELD EQUIPMENT

At the time of initial assignment and at least annually thereafter, the employer shall instruct every employee in the safe operation and servicing of all covered equipment with which he is or will be involved, including at least the following safe operating practices: (ii) Permit no riders on farm field equipment other than persons required for instruction or assistance in machine operation;

Fall  
August 15, 2022  
Isabella County

A business owner was replacing a fluorescent lightbulb from a fixture using a 48 inch stepladder. The event was not witnessed, but the owner and ladder were found on the ground by another employee. The owner passed away the following day.



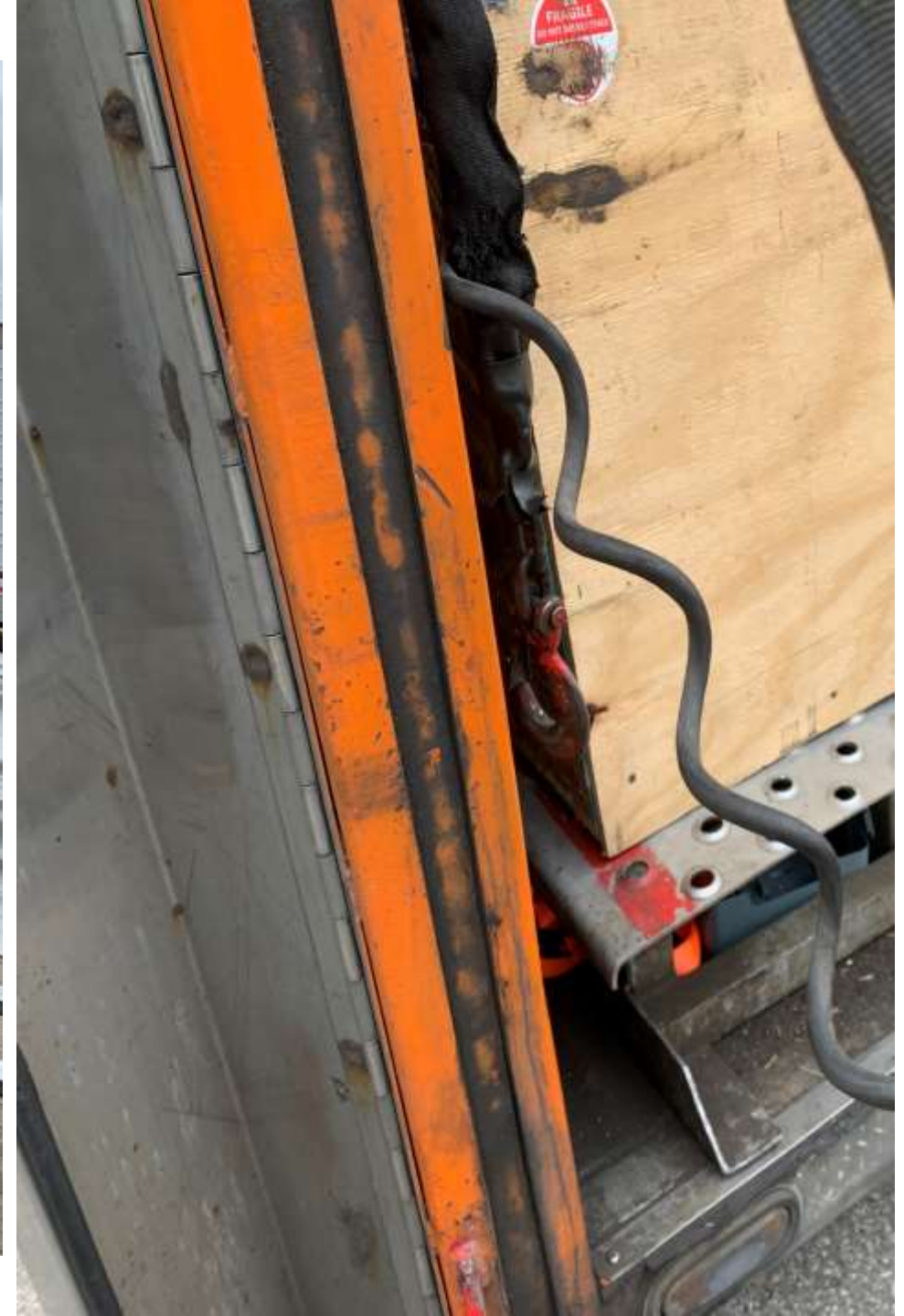
# Citations

- 408.22139(1): ADM PART 11, RECORDING AND REPORTING OF OCCUPATIONAL INJURIES AND ILLNESSES

Fatalities. Within 8 hours after the death of any employee from a work-related incident, you must report the fatality by telephone to the MIOSHA toll-free central telephone number: 1-800-858-0397.

# Struck By October 7, 2022 Oakland County

A delivery driver was preparing to unload product from a trailer at a customers location. As they attempted to open the lift gate, the gate fell, striking the employee.



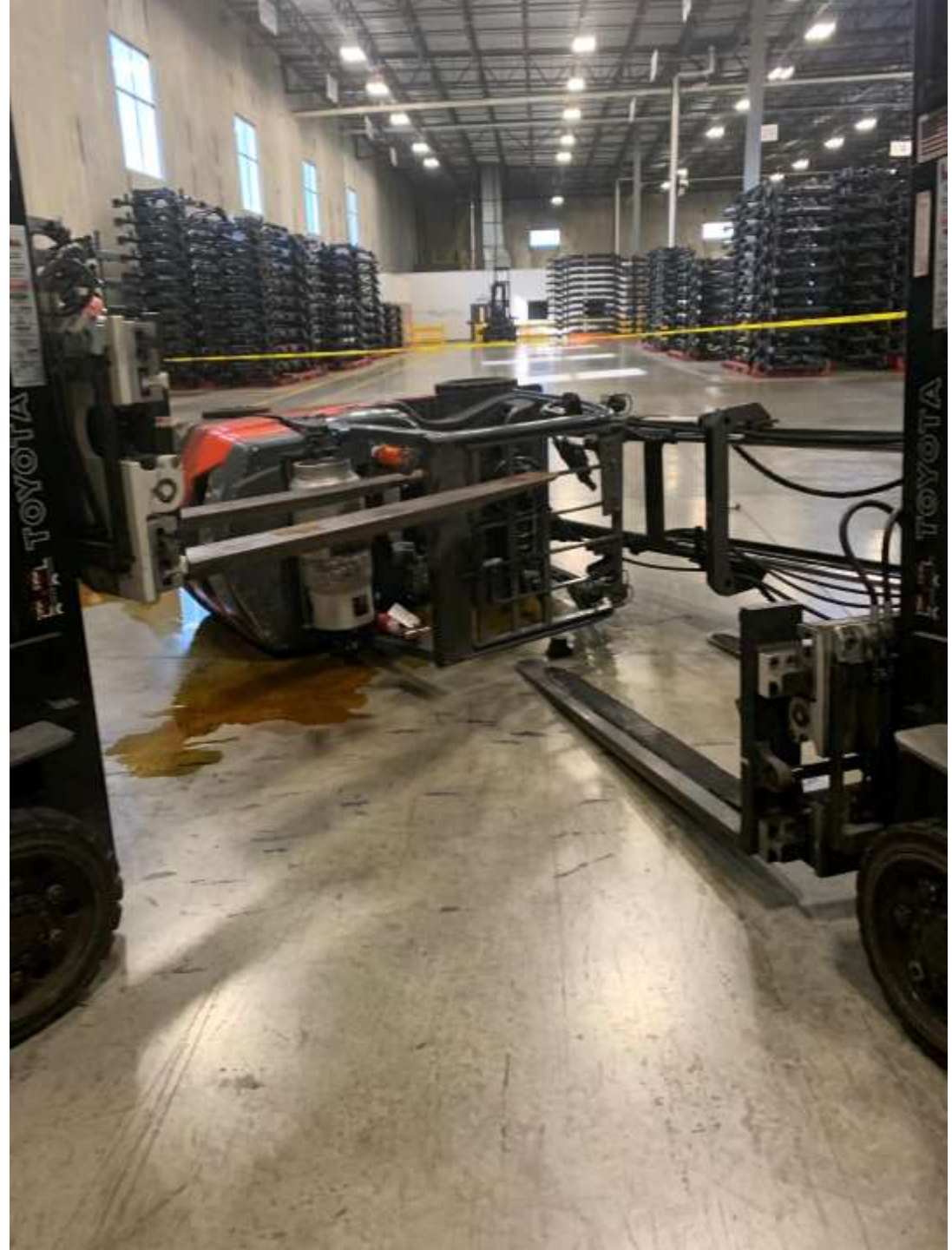
# Citations

- 408.1011(a): ACT 154, MICHIGAN OCCUPATIONAL SAFETY AND HEALTH ACT



# Struck By October 24, 2022 Macomb County

A powered industrial truck operator was driving their truck at a high rate of speed with the forks raised over 14 feet high. The operator made a sharp turn and the truck tipped over.



# Citations

- 408.1011(a): ACT 154, MICHIGAN OCCUPATIONAL SAFETY AND HEALTH ACT
- 408.12187: GI PART 21, POWERED INDUSTRIAL TRUCKS  
In level areas an operator shall travel with the load engaging means elevated only sufficiently to clear obstacles on floor or roadway.
- 408.12188: GI PART 21, POWERED INDUSTRIAL TRUCKS  
Starts, stops, and turns shall be made in a manner which will prevent a load from shifting or overturning the truck.

# Struck By October 26, 2022 Kent County

A forklift operator at a lumber yard was removing pallets of OSB from the trailer. At the same time, the truck driver was wrapping up the straps. The forklift operator was removing two bunks of board and caught the adjacent stack, which fell on the truck driver.



# Citations

- Lumber yard

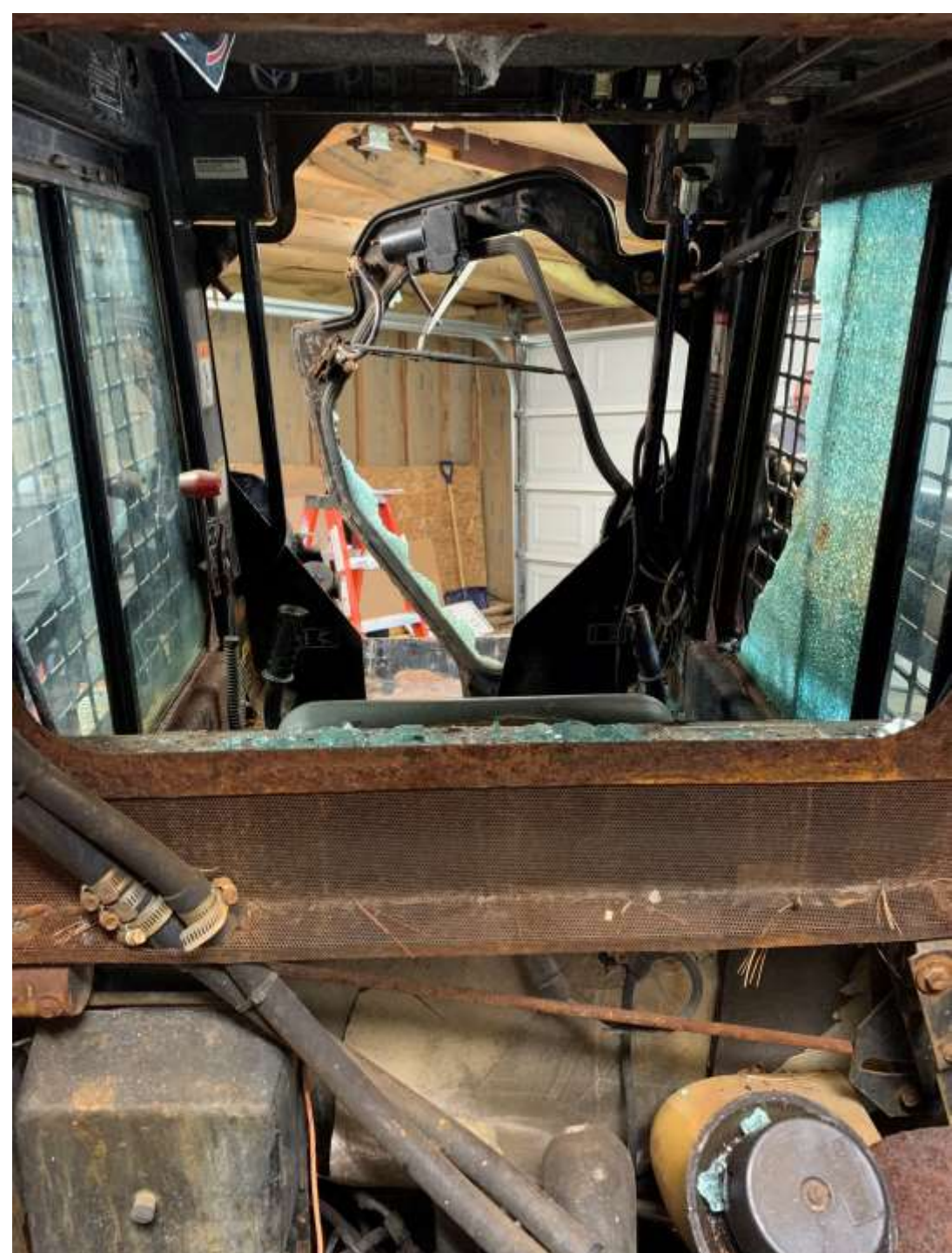
Part 21 Rule 2172. (1) An operator shall safeguard other employees at all times.

- Trucking Company

General Duty

# Struck By October 27, 2022 Iosco County

Employees were trying to identify a fluid leak on a skid steer. Employee attempted to exit the skid steer the bucket arm lowered and pinned the 30-year-old employee against the pillar of the unit.





# Citations

- 408.12232: GI PART 22, TRACTORS

An employer or his designated representative shall provide training to an employee prior to the employee's assignment as an operator of a tractor.

- 1910.147(c)(1): GI PART 85, THE CONTROL OF HAZARDOUS ENERGY SOURCES

The employer shall establish a program consisting of energy control procedures, employee training and periodic inspections

# Struck By October 28, 2022 Kent County

A maintenance employee was crushed between the loading dock and a box truck. The box truck was being driven by an employee from another employer.



# Citations

- 408.1011(a): ACT 154, MICHIGAN OCCUPATIONAL SAFETY AND HEALTH ACT

An employer shall furnish to each employee, employment and a place of employment that is free from recognized hazards that are causing, or are likely to cause, death or serious physical harm to the employee.

Caught in or  
Between  
October 30, 2022  
Oakland County

Employee/Owner was working on an irrigation system for a customer and became stuck in a hole while accessing the sprinkler line.

# Citations

- No Citations

OPEN

Inhalation  
November 28,  
2022  
Washtenaw

- The 49-year-old hotel employee died after being found slouched against a wall of a third-floor boiler room of a hotel. The man's death resulted from excessive exposure to carbon monoxide, according to his autopsy.



Photo curtesy ClickonDetroit.com



OPEN

## Citations

- 325.51103(a)(iii): OH PART 301, AIR CONTAMINANTS FOR GENERAL INDUSTRY  

An employee's exposure to any substance listed in table G-1-A shall not exceed the time-weighted average (TWA) limit, short-term exposure limit (STEL) and ceiling limit specified for that substance in table G 1 A.
- 408.10011(a): GI PART 1, GENERAL PROVISIONS  

An employer shall comply with all of the following:

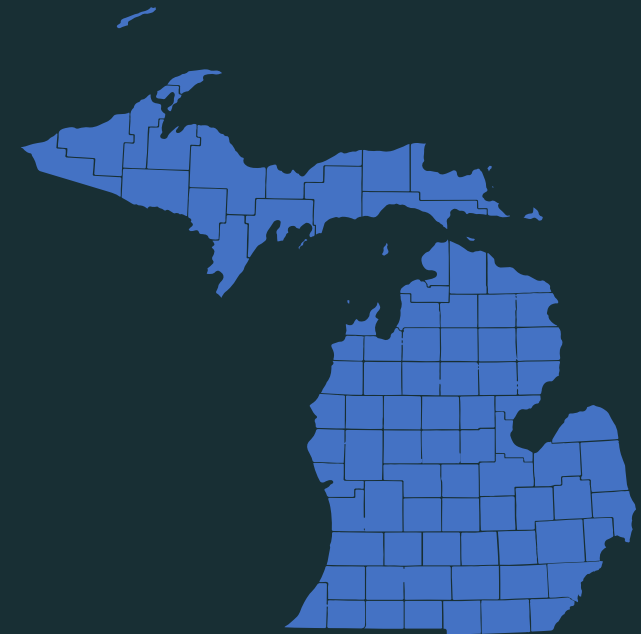
Provide training to each newly assigned employee regarding the operating procedures, hazards, and safeguards of the job.
- 325.52010: OH PART 520, VENTILATION CONTROL  

The discharge locations of local exhaust or general exhaust systems shall not permit exhausted air to re-enter a workroom or other buildings directly, or indirectly, through air supply systems without substantial dilution.
- 325.52005(1): OH PART 520, VENTILATION CONTROL  

An employer shall provide a supply ventilation system to ensure a flow of air into the working environment to equally replace the volume of air exhausted.

# 2022 Michigan Construction Fatalities

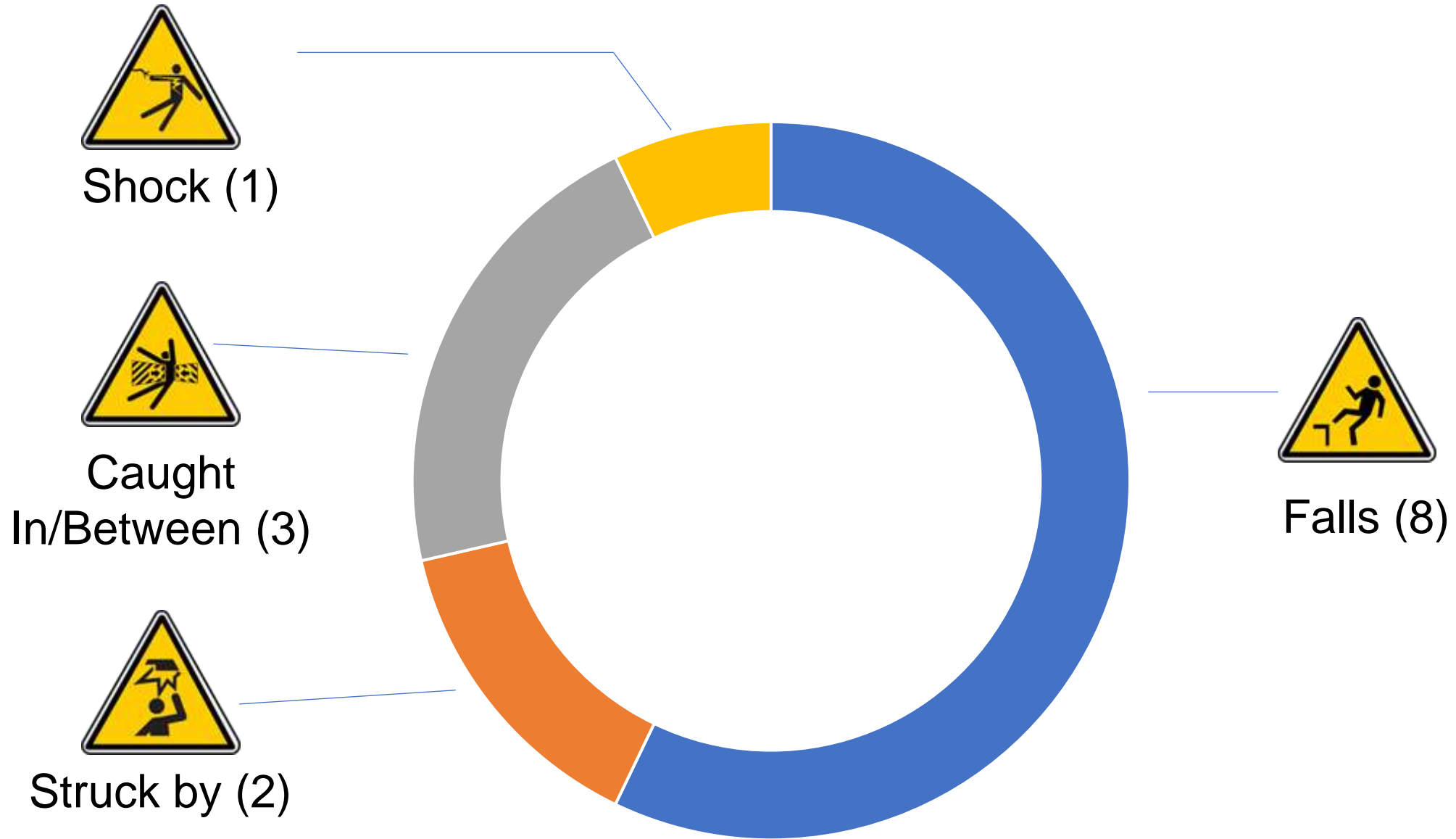
MIOSHA Consultation Education and Training



# Fatal Four

- Fatal Four accidents resulted in 100% of all construction fatalities in Michigan.
  - Falls
  - Struck By
  - Caught in and Caught between
  - Electrocutions

# Fatality Types 2022



*“that happens someplace else”*



**Caught  
In/Between  
January 11, 2022  
Monroe County**

- A 29-year-old steel laborer was operating an extendable boom forklift to pick up pre-insulated metal panels when he leaned through the cab and was crushed by the lift boom.







# Citations

- No Citations

**Struck By  
March 1, 2022  
Jackson  
County**

- A 35-year-old laborer was struck by a dozer that was backing up.





# Citations

- **Rule 114.** (2) An accident prevention program shall, at a minimum, provide for all of the following:
- (c) Instruction to each employee in the recognition and avoidance of hazards and the regulations applicable to his or her work environment to control or eliminate any hazards or other exposure to illness or injury.

**Fall**  
**March 28, 2022**  
**Livingston**  
**County**

- A 61-year-old construction foreman was performing framing activities and fell from the third story of a residential construction project. He was not wearing fall protection.







# Citations

- **1926.501(b)(13)** "Residential construction." Each employee engaged in residential construction activities 6 feet (1.8 m) or more above lower levels shall be protected by guardrail systems, safety net system, or personal fall arrest system unless another provision in paragraph (b) of this section provides for an alternative fall protection measure. Exception: When the employer can demonstrate that it is infeasible or creates a greater hazard to use these systems, the employer shall develop and implement a fall protection plan which meets the requirements of paragraph (k) of 1926.502.
- **1926.503(a)(1)** The employer shall provide a training program for each employee who might be exposed to fall hazards. The program shall enable each employee to recognize the hazards of falling and shall train each employee in the procedures to be followed in order to minimize these hazards.
- **Rule 114. (1)** An employer shall develop, maintain, and coordinate with employees an accident prevention program, a copy of which shall be available at the worksite.
- **1926.100(a)** Employees working in areas where there is a possible danger of head injury from impact, or from falling or flying objects, or from electrical shock and burns, shall be protected by protective helmets.
- **Rule 2149. (1)** A stairway shall be equipped with a stair railing or handrail as follows:
  - (b) A stairway which is not more than 44 inches (112 cm) wide and which has 1 open side shall have a stair railing on the open side.

**Fall**  
**March 29, 2022**  
**Oakland County**

- A 68-year-old electrician was performing electrical activities when he fell off a ladder. He was transported to the hospital and passed away.



2022/03/30 12:56



2022/03/30 13:06

# Citations

- No Citations

# **Cave-In**

## **April 29, 2022**

### **Kent County**

- On April 29, 2022, a 68-year-old laborer was placing underground drainage tiles for a pole building project. The property owner discovered the excavation had collapsed and called 911. Authorities later recovered two bodies.
- On April 29, 2022, a 59-year-old owner was placing underground drainage tiles for a pole building project. The property owner discovered the excavation had collapsed and called 911. Authorities later recovered two bodies.







# Citations

- No Citations

**Fall**  
**(from elevation)**  
**June 21, 2022**  
**Lapeer County**

- A 34-year-old roofer was installing a metal roof. While climbing down, he fell off the ladder, falling approximately 10 feet and struck a metal trash bin.



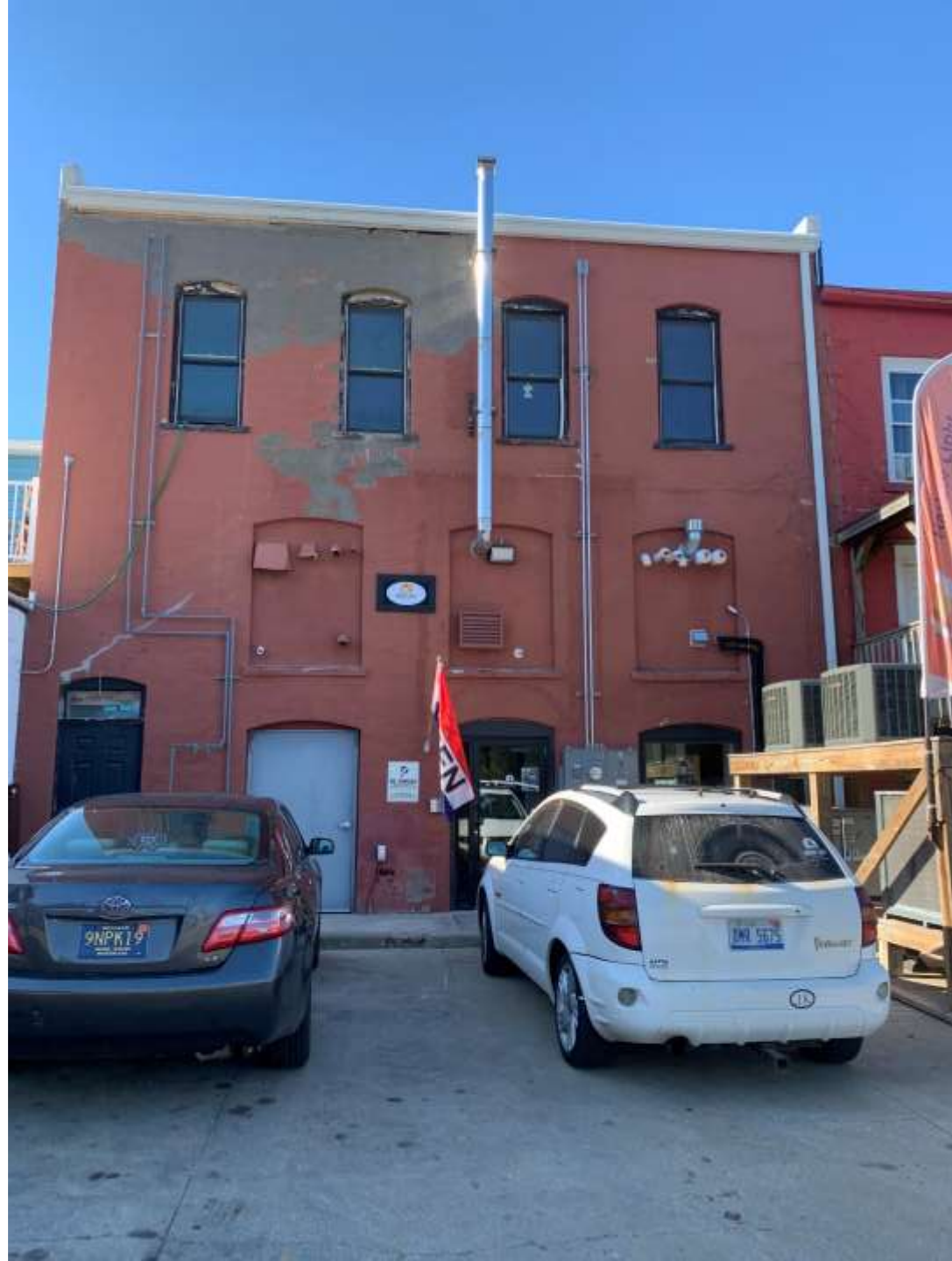


# Citations

- No Citations

**Fall**  
**June 24, 2022**  
**Van Buren**  
**County**

- A 49-year-old laborer was removing trash through a second story window into a wood box on the forks of a rough terrain fork truck. The worker exited the window into the box. Both the box and the employee fell off the forks approximately 16 feet to the ground.







# Citations

- **1926.602(c)(1)(vi)** All industrial trucks in use shall meet the applicable requirements of design, construction, stability, inspection, testing, maintenance, and operation, as defined in American National Standards Institute B56.1-1993, Low Lift and High Lift Trucks.
- **1910/178(l)(6)** Certification. The employer shall certify that each operator has been trained and evaluated as required by this paragraph (l). The certification shall include the name of the operator, the date of the training, the date of the evaluation, and the identity of the person(s) performing the training or evaluation.
- **1926.501(b)(14) "Wall openings."** Each employee working on, at, above, or near wall openings (including those with chutes attached) where the outside bottom edge of the wall opening is 6 feet (1.8 m) or more above lower levels and the inside bottom edge of the wall opening is less than 39 inches (1.0 m) above the walking/working surface, shall be protected from falling by the use of a guardrail system, a safety net system, or a personal fall arrest system.
- **Rule 114.** (1) An employer shall develop, maintain, and coordinate with employees an accident prevention program, a copy of which shall be available at the worksite.
- **Rule 132.** (3) A person who has a valid certificate in first aid training shall be present at the worksite to render first aid. A certificate is valid if the requirements necessary to obtain the certificate for first aid training meet or exceed the requirements of the United States Bureau of Mines, the American Red Cross, the guidelines for basic first aid training programs, or equivalent training.

# **Struck By July 15, 2022 Macomb County**

- A 53-year-old truck driver walked behind a tandem dump truck to clear the bumper of concrete debris, when they were struck by a bulldozer backing up.





# Citations

- **Rule 114.** (2) An accident prevention program shall, at a minimum, provide for all of the following:
  - (a) Instruction to each employee regarding the operating procedures, hazards, and safeguards of tools and equipment when necessary to perform the job.

**Fall**  
**August 2, 2022**  
**Wayne County**

- A 47-year-old painter was on a ladder painting the exterior of a residential house. He fell approximately 20 feet head-first on to another painter below.







# Citations

- No Citations

**OPEN**

**Shock**  
**August 23, 2022**  
**Macomb County**

- a 46-year-old roofer and crew leader climbed a secured ladder while carrying a 10-foot piece of metal trim. The metal trim came into contact with a live electrical line, causing him to fall from the ladder approximately 18 feet to the ground.

**Fall  
September 12,  
2022  
Allegan County**

- A 39-year-old framer was working on fascia boards from a roof with other employees. A piece of wood being used for a slide guard/toe board broke, causing two employees to fall to the ground. One employee went to the hospital, the other passed away due to injuries sustained.





# Citations

- **1926.501(b)(13) "Residential construction."** Each employee engaged in residential construction activities 6 feet (1.8 m) or more above lower levels shall be protected by guardrail systems, safety net system, or personal fall arrest system unless another provision in paragraph (b) of this section provides for an alternative fall protection measure. Exception: When the employer can demonstrate that it is infeasible or creates a greater hazard to use these systems, the employer shall develop and implement a fall protection plan which meets the requirements of paragraph (k) of 1926.502.
- **1926.100(a)** Employees working in areas where there is a possible danger of head injury from impact, or from falling or flying objects, or from electrical shock and burns, shall be protected by protective helmets.
- **Rule 114. (1)** An employer shall develop, maintain, and coordinate with employees an accident prevention program, a copy of which shall be available at the worksite.
- **Rule 132. (3)** A person who has a valid certificate in first aid training shall be present at the worksite to render first aid. A certificate is valid if the requirements necessary to obtain the certificate for first aid training meet or exceed the requirements of the United States Bureau of Mines, the American Red Cross, the guidelines for basic first aid training programs, or equivalent training.

# Citations continued

- **Rule 3214.** (1) The employer shall provide a safety harness that has a lanyard which is in compliance with construction safety standard Part 45. "Fall Protection," R 408.44501 to R 408.44502 and which is affixed to attachment points provided and approved by the manufacturer. Any occupant of an aerial work platform described in the provisions of R 408.43202(a) and (c) and figures 1 and 3 shall use the harness. A fall arrest system shall only be used where the aerial lift is designed to withstand the vertical and lateral loads caused by an arrested fall.
- **Rule 3214.** (4) An employer shall not allow employees to exit an elevated aerial work platform, except where elevated work areas are inaccessible or hazardous to reach. Employees may exit the platform with the knowledge and consent of the employer. When employees exit to unguarded work areas, fall protection shall be provided and used as required in construction safety standard Part 45. "Fall Protection," R 408.44501 to R 408.44502.
- **Rule 3207.** (1) An employer shall provide the operator of an aerial work platform with an aerial work platform permit.

**Fall**  
**October 5, 2022**  
**Oakland County**

- A 57-year-old carpenter fell off a scaffold approximately 20-feet to the ground. He was transported to the hospital and passed away due to injuries sustained.







# Citations

- Rule 1210. (2) The support for a scaffold shall be sound, rigid, and capable of carrying the maximum intended load without settling or displacement. Leveling jack adjusting screws, when used, shall not extend more than 18 inches below the base of the scaffold. Unstable objects, such as barrels, boxes, pallets, brick, or concrete blocks, shall not be used to support a scaffold or work platform. Scaffold poles, legs, posts, frames, and uprights shall bear on base plates, along with mudsills or other adequate support.
- Rule 1213. (1) A guardrail shall be installed on any open side or end of a scaffold work platform that is 10 feet (3.1 meters) or more above the floor or ground, except for any of the following:
  - (a) A boatswain's chair.
  - (b) A catenary scaffold.
  - (c) A float scaffold.
  - (d) A ladder jack scaffold.
  - (e) A needle beam scaffold.

The guardrail shall be as prescribed in Construction Safety Standard Part 21. "Guarding of Walking and Working Areas," as referenced in R 408.41201.

# Citations continued

- Rule 1321. (1) The department representatives, upon presenting appropriate credentials, may enter, without delay and at reasonable times, any factory, plant, establishment, construction site, or other area, workplace, or environment where work is performed by an employee of an employer to inspect and investigate, during regular working hours and at other reasonable times and within reasonable limits and in a reasonable manner, any such place of employment, and all pertinent conditions, structures, machines, apparatus, devices, equipment, and materials therein; to question privately any employer, owner, operator, agent, or employee; and to review records required by the act and rules promulgated pursuant to the act, and other records which are directly related to the purpose of the inspection or investigation.

**OPEN**

**Fall  
December 7,  
2022  
Oakland  
County**

- a 22-year-old construction worker was installing new windows on a residential site when the boom-lift he was standing on tipped over causing him to fall and hit his head on trees.

**Thank you.**

MIOSHA Consultation Education and Training Division

517.284.7720

