

A Closer Look at Workplace Fatalities

MIOSHA Consultation Education and Training Division



MIOSHA Mission

Help Protect the
Safety and Health
of Michigan
Workers!

MIOSHA Motto

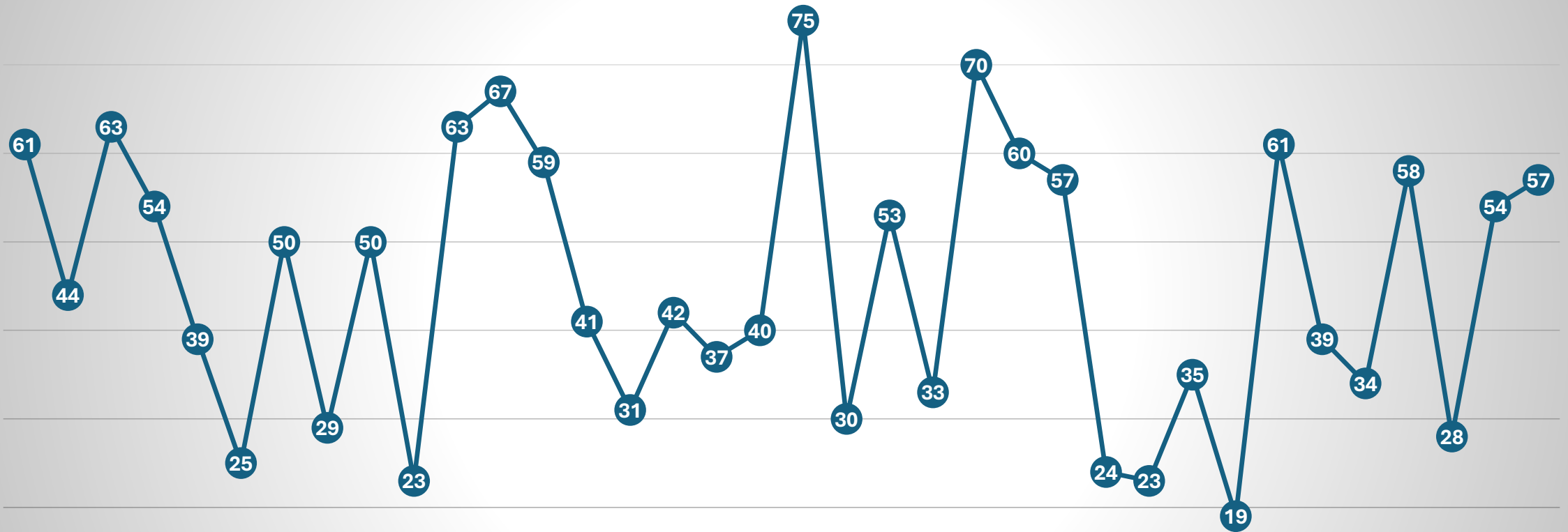
Educate Before
We Regulate!





All 36 fatalities from
2023 were men.

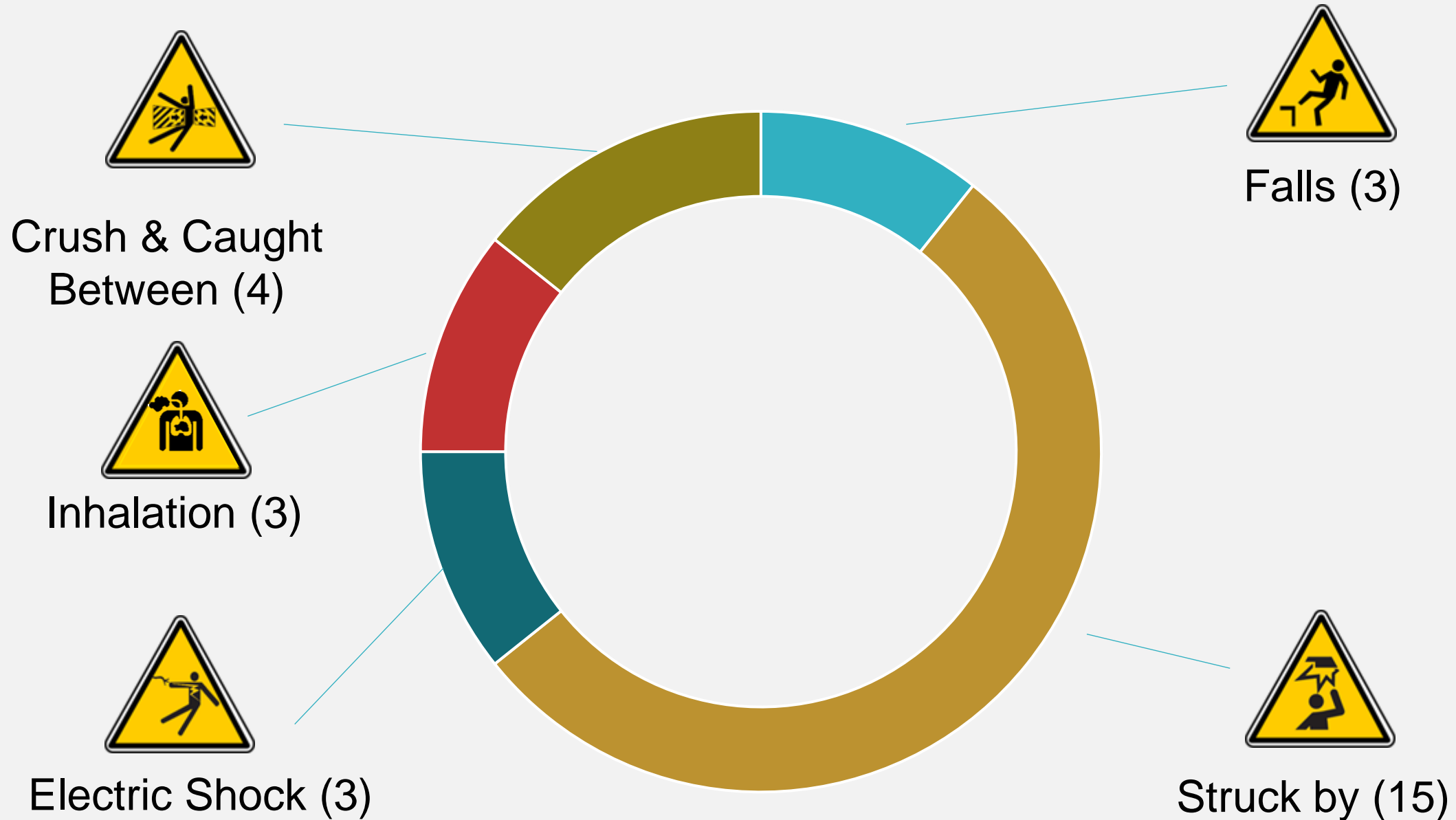
Ages



2023

Michigan General Industry Fatalities

GI Fatality Types 2023



January 4, 2023 Struck By Presque Isle County

- A cement truck with a full load was stuck in the mud at a work site. They attempted to pull the cement truck out of the mud with a Crawler Dozer. The hitch on the dozer broke free from the bolts and fatally struck the driver of the cement truck in the face.



Citations

- 408.1011 (a) (General Duty) – select and utilize towing equipment designed for the anticipated load, following manufacturers instructions, and train employees on safe towing.

January 23, 2023 Struck By Wayne County

- Employee was attempting to fix a large single-rim tire due to nail damage. The sidewall of the tire burst, sending the tire and rim into the air, striking the employee.



Citations

- Part 72
 - Rule 11(a) Training employees
 - 35(4) Tire restraint
 - 35(5) Clip on chuck and gauge or regulator
 - 37(2) Rim manual requirement
 - 37(8) Employee to stay out of the trajectory of the wheel when inflating
- Part 11
 - Rule 39(1) Fatality to be reported within 8 hours

February 21, 2023

Inhalation

Wayne County

- Employee owner was found unresponsive when an employee came to work in the morning. During the resuscitation efforts, employees and medical responders started feeling ill. FD test the air and found high levels of CO which maxed out their meters at 500ppm. When the only vehicle in the garage was turned on, CO levels rose to over 2000PPM.



Citations

- No Citations due to business dissolving.
- Originally cited the following:
 - Part 72 Rule 24(1) – Ventilation
 - Part 301 Rule 103 (a)(iii) -Exposure limits
 - Part 92 Rule 1200(e)(1), (h)(3) - Haz Com Plan and Training

February 22, 2023

Shock

Van Buren County

- A winter storm caused a branch to fall on a power line and started burning. Two firefighters were standing about 40 feet away from the burning branch and another branch broke, striking the primary power line. The powerline struck one of the firefighters and he fell onto the live wire.



Citations

- No Citations Issued

March 30, 2023 Struck By Antrim County

- The refuse truck operator was towards the back of the truck operating the controls to dump a trash hopper when he was struck by a Ford F150.



Citations

- No Citations Issued

April 2, 2023 Struck By Wayne County

- While returning to their work location, the employee, an EMT, stopped on the freeway to assist in a vehicle accident. While attending to the victim, both the victim and the stranded driver were struck by a vehicle that lost control on the freeway.



Citations

- Part 11 Recordkeeping

Rule 39(1) Fatality to be reported within 8 hours

April 4, 2023 Struck By Oakland County

Open

- A 61-year-old electrical maintenance journeyman, part of multi-person crew, was struck by a radiator assembly during the dismantlement of a transformer at an electrical substation.



Citations

Open

- Part 1 General Provisions

Rule 11(a) Training

- Part 86 Electric Power Generation, Transmission, and Distribution

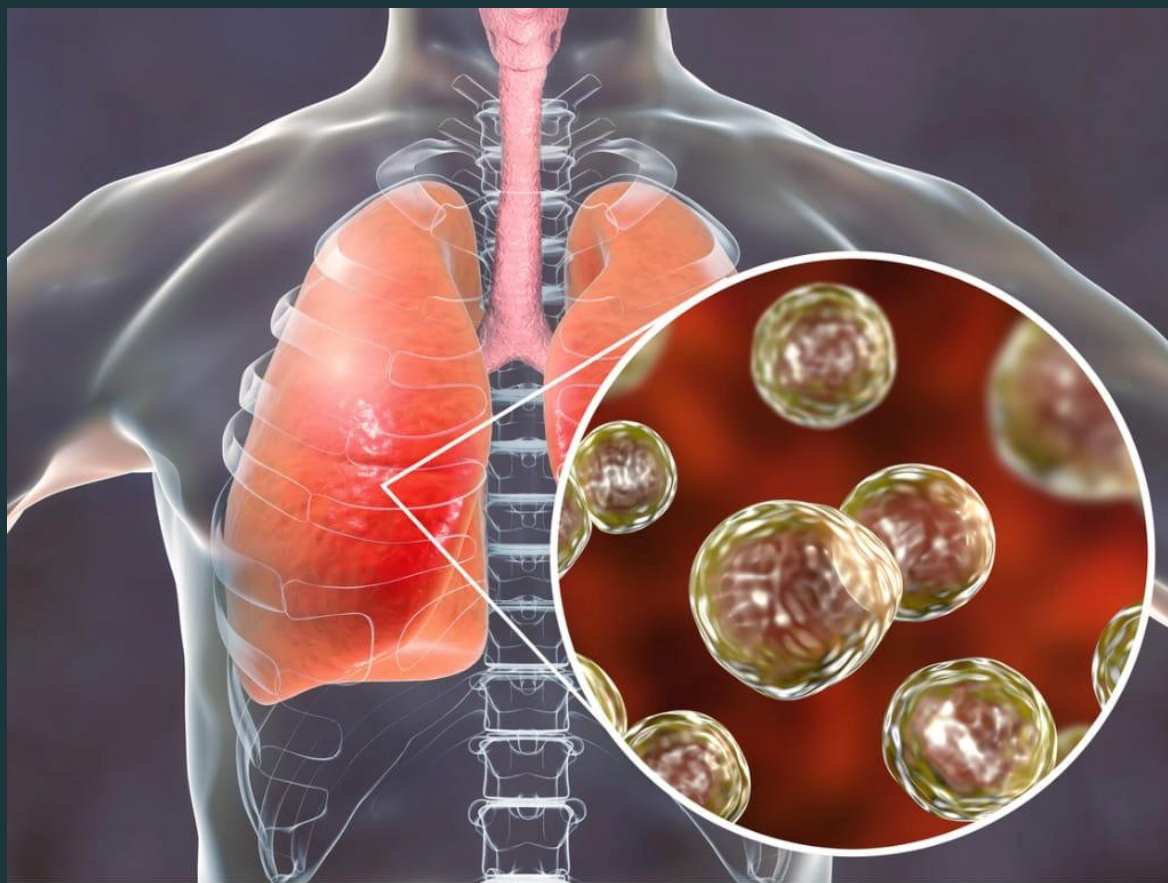
Rule 269(c)(2) – Job briefing shall cover procedures, hazards, energy source controls, precautions, and PPE

April 11, 2023

Inhalation

Delta County

- Employee worked for a hazard abatement company. They were conducting mold remediation at a facility that was experiencing a blastomycosis outbreak. One week later the employee tested positive for blastomycosis and passed away 11 days later.



Citations

- Part 11 Recordkeeping

Rule 39(1) Reporting fatalities within 8 hours

Rule 29(4) recording on the log within 7 days of receiving information

April 18, 2023 Caught Between Ottawa County

- Two employees were trying to remove a pin from the bucket of an excavator. Employee was struck in the head by the arm of the excavator and a bollard.



Citations

- 1011 (A) General Duty - Employees working in the operating radius of the equipment
- Part 22 Tractors
 - Rule 35 (1) - Repair work shall not be performed with the engine running
 - Rule 32 - Training

April 24, 2023 Struck By Sanilac County

- A Ford F650 bucket truck and wood-chipper were stuck. Employee attached a rigging line to a skid steer loader to pull the truck out. The line snapped and struck the employee in the chest as he was operating the skid steer.



Citations

- 408.1011 (a) (General Duty) Safe process and equipment for moving vehicles when stuck.

April 24, 2023 Caught Between Eaton County

- Employee was torching material after operating a thermoforming machine. The machine was cycled and a conveyor struck the employee as it was loading a new piece of stock.



Citations

- Part 14 Conveyors

- Rule 11(1) - Training

- 11(2) - Inspections

- 21(3) - Indexing conveyor must be guarded

- 32(2) - Powered conveyor shall not be started until employees are alerted

- 33(1) – Emergency stop within reach of the employees

April 25, 2023 Struck By Marquette County

- The employee was inflating a tire that was laying flat on the ground. The air compressor was set to 150 psi and there was no inline air pressure gauge. The tire was rated to 51 psi and there was no restraining device for tire inflation. The tire exploded, striking the employee.



Citations

- Part 72
 - 11 - Training
 - 35(1) - Supervision
 - 35(5) - Clip on chuck and gauge or regulator
 - 37(8) - Employee to stay out of the trajectory of the wheel when inflating
- Part 11
 - Rule 39(1) - Fatality to be reported within 8 hours

June 28, 2023 Struck By Calhoun County

- An employee was cutting down an approximate 30-foot-tall oak tree using a chainsaw. While making the back cut on the oak tree, it split near the top of the tree, approximately 15 feet from the ground and fell backwards on top of the employee. The employee was fatally injured.

No Photos Available

Citations

- Part 53 Rule 36 (1) Before a cut is started, a feller shall check for other employees and dead limbs, angle of tree, wind condition, location of other trees and other hazards, and plan his path of retreat
- Part 11 Rule 39 (1) Requirement to report fatalities within 8 hours

July 7, 2023 Shock Oakland County

- The employee was called to an apartment complex to snake a drain that had backed up into the basement. The employee and Mgmt company could only get electricity from a unit on the third floor. They connected several extension cords together to reach the basement and snake the drain. It is believed the extension cord fell into the water or the snaking machine experienced an electrical fault and electrocuted the employee.



Citations

- Part 40 Rule 334(a)(4) Electrical equipment shall be approved for highly conductive work locations
- Part 11 Rule 39(1) Requirement to report fatalities within 8 hours

July 10, 2023 Caught Between Allegan County

- Employee was operating a zero-turn riding lawn mower on a 27-degree slope and the deceased went off a 27-inch retaining wall with the mower falling onto of the operator. The ROPs system struck the employees' head.



Citations

- General Duty – Seatbelt
- Part 54

Rule 43(4) Operated across a slope greater than 17 degrees

July 10, 2023 Struck By Mackinac County

- Employee was a truck driver that pulled over to the side of the road to adjust the straps on the equipment on his trailer. He was struck by a passing truck.



Citations

- No Citations

July 13, 2023
Fall
Saginaw County

- The owner/operator was elevated 30 feet off the ground in an aerial bucket. The boom was rubbing on the trunk of the tree and when it released, the bucket bounced, and the operator fell to the tuck below.

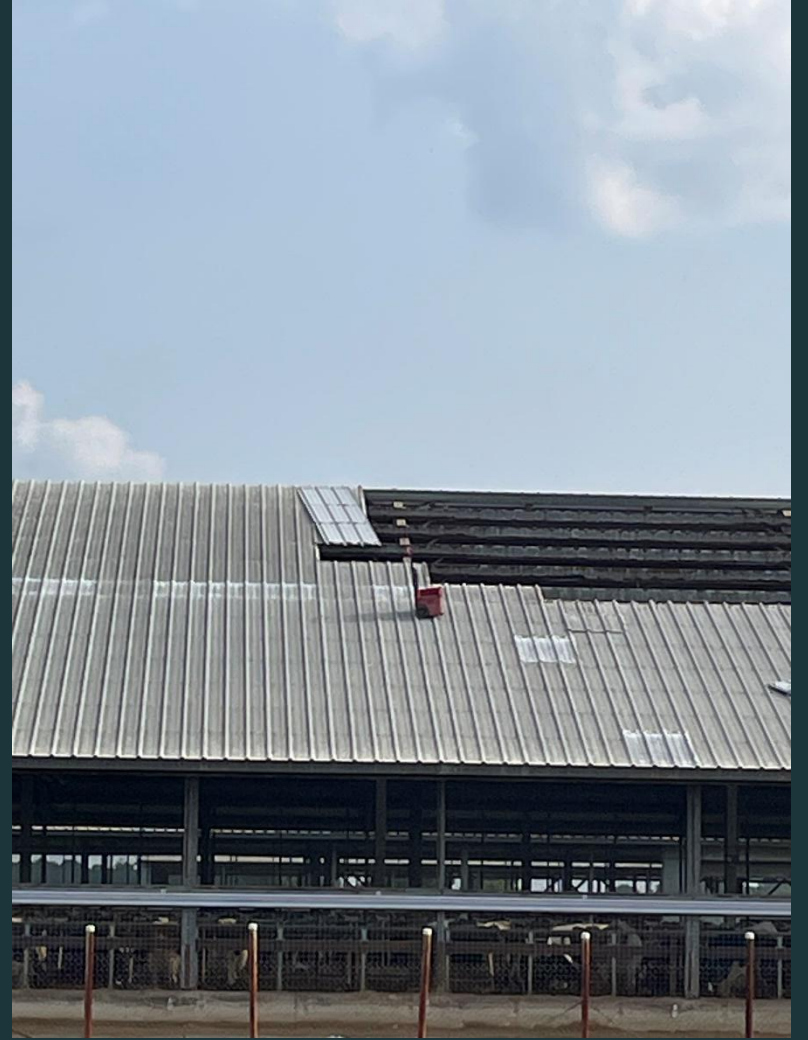


Citations

- Notice of potential hazard Part 53 13(2) and Part 58 36(1), 15(1), and 15(2)

July 24, 2023
Fall
Lenawee County

- Employee was removing a portion of sheet roofing on a cattle barn. Employee fell through an opening and hit the ground 30 feet below.



Citations

- Notice of potential hazard – Part 2 rule 1910.28(b)(1) – Fall protection

August 20, 2023 Inhalation Sanilac County

- Maintenance employee called in sick. Two days later he was admitted to the hospital with Legionnaires Disease. He passed away seven days later.



Citations

- Act 154 – General Duty – Exposure of Legionella Bacteria from affected water sources.
- Part 11 Recordkeeping – Rule 39(11) Failure to notify MIOSHA of a work related fatality.

August 31, 2023

Shock

Ingham County

- While aloft trimming a tree limb, a 31-year-old tree trimmer contacted with a live overhead power line. The employee was pronounced dead at the scene.



Citations

- Part 53 Rule 11 Training
- Part 53 Rule 21 (4) A tree worker shall maintain his body and tools not less than the distance prescribed in table 1 from an energized conductor.
- Part 11 Rule 39 (1) Requirement to report fatalities within 8 hours

September 19, 2023 Caught Between Kent County

- Employee was operating a Zero-turn Cub Cadet lawn mower. He was driving down a 20 degree hill and fell off a 4 foot retaining wall. Operator did not appear to be wearing a seatbelt, but the ROP system was in use.

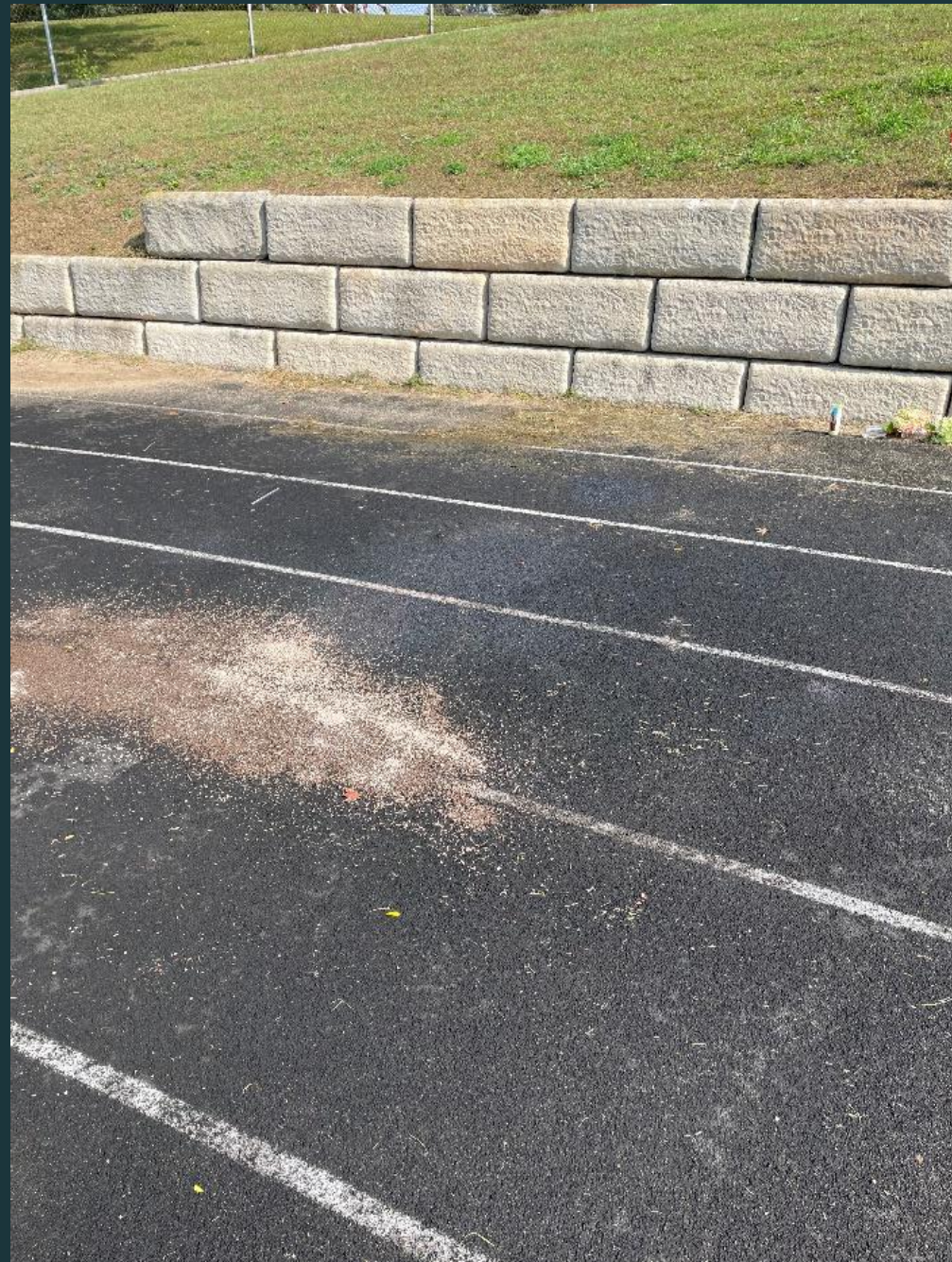
Operator Protective System (OPS)

1. This machine is equipped with an Operator Protective System (OPS), which includes:
 - a. A Roll Over Protective Structure (ROPS) of the fixed or folding configuration.
 - b. Seat belt assembly with retractable function.
2. ROPS are structures designed to provide a crush-resistant space for the operator when properly seat-belted within the designated seating area of the machine in the event of a machine tip-over or roll-over. Folding ROPS shall be used in their fully upright and locked configurations except in those circumstances whereby they need to be momentarily folded-down to avoid contact with items such as tree limbs, clothes lines, guy wires, utility poles, buildings, etc. At other times and conditions, ROPS shall be in their fully upright and locked configurations.

⚠ DANGER

Damaged ROPS must be replaced prior to operator use.

3. Seat belts shall be used and shall be properly fastened about the operator's waist at all times, except when the ROPS are:
 - a. Not properly installed and/or not properly secured onto the machine.
 - b. Damaged in such manner that their structural integrity has been compromised.
 - c. Not in their fully upright and locked position.



Citations

- General Duty – Seatbelt
- Part 54
 - Rule 43(4) Operating on slopes

August 31, 2023
Fall
Ingham County

- Three employees were replacing gutters on a business. They were about 13 feet in the air and hanging a 60-foot-long section when one employee fell backwards off the ladder and hit the concrete.



Citations

- No Citations

October 12, 2023 Struck Against St. Joseph

- Employee was operating a potato piler that eventually stopped running. Other employees went to see what was wrong and found the employee on the ground with a head injury. He passed away nine days later.



Citations

- Act 154 – General Duty – Fall Protection (agriculture)

October 23, 2023 Struck Against Macomb County

- Employees were loading new trucks onto rail cars for transportation. One employee was standing in front of a parked truck when another employee drove a truck into the rail car, striking the employee.



Citations

- General Duty – no written procedures for loading and auditing.
- Part 1 General Provisions - Rule 11 - Training.
- Part 11 Recordkeeping – Did not report the incident to MIOSHA

October 28, 2023 Struck By Saginaw County

- Employee/owner was in the process of removing 4 trees at a property. He was cutting a 2 ft diameter tree about 20 feet in length. An inadequate back cut and undercut caused the employee to cut through the hinge wood. The falling tree struck the employee.



Citations

- No Citations. Notice of Potential Hazards:
- Part 53
 - Rule 36(1) Before cut, check for employees, dead limb, wind, retreat, etc.
 - Rule 36(3) Size of undercut
 - Rule 36(4) Back cut shall leave enough hinge wood
 - Rule 36(9) If it could fall the wrong direction, use wedges, block/tackle, or rope to control the fall.

October 30, 2023 Struck By Lapeer County

OPEN

- A 29-year-old truck driver was delivering pre-cast concrete wall panels. The victim was unloading the last load when the panels fell off the trailer crushing the victim.



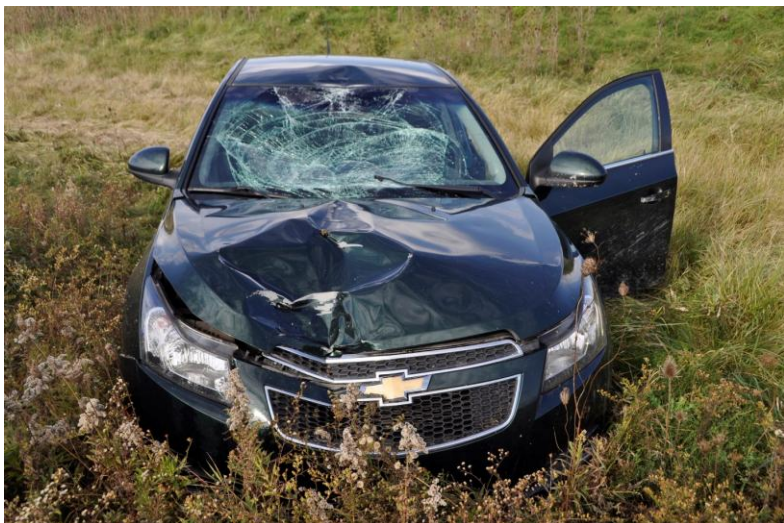
Citations

OPEN

- Part 1 General Provisions Rule 11 – Training
- General Duty

November 4, 2023 Struck By Kent County

- Tow truck driver was trying to get a dog that was running loose in the median of M-6. A vehicle lost control and struck the tow truck driver in the median, fatally injuring him.



Citations

- Part 11 Rule 39 (1) Reporting of a fatality within 8 hours

December 7, 2023 Struck By Wayne County

- Employee was emptying his load at the dump when the trailer next to him tipped over and crushed the cab.



Citations

- No Citations issued

Thank you.

MIOSHA Consultation Education and Training Division

517.284.7720



2023 Michigan Construction Fatalities

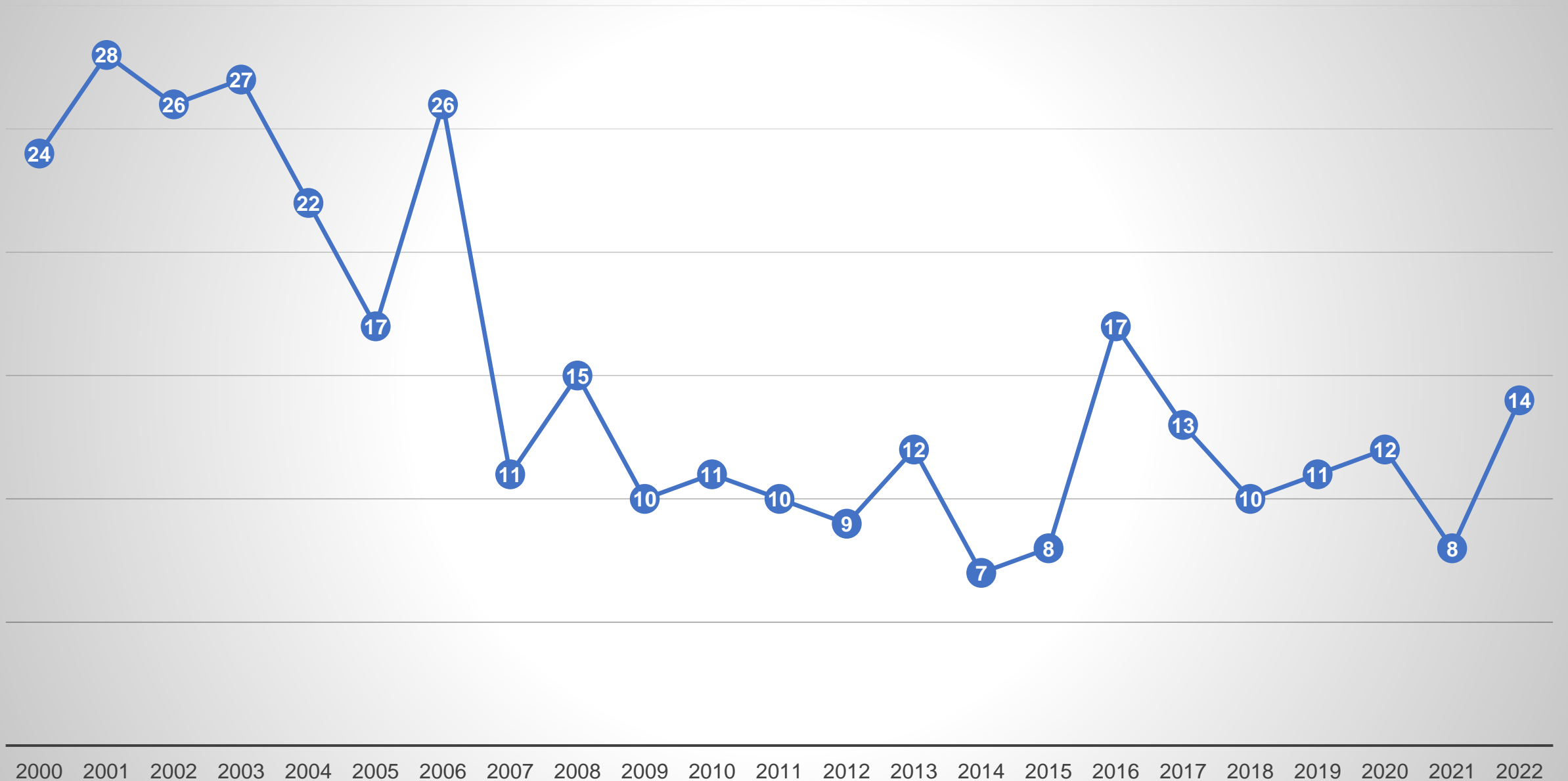


Fatality Types

Focus Four Result in 100% Fatalities in Michigan



Construction Fatalities in Michigan



“that happens someplace else”



**March 3, 2023
Struck By
Van Buren
County**

On March 3, 2023, a 58-year-old Van Buren County road worker was part of a four-man crew performing road repair work. The victim was performing traffic control when he was struck by a commuter vehicle.



Citations

No Citations Issued

**March 15, 2023
Fall
Wayne County**

- On March 15, 2023, a 24-year-old laborer/roofer was performing roofing operation on a flat roof near a skylight. The victim fell 20 feet through the skylight and landed on the concrete floor below. The victim was admitted to the hospital on March 15, 2023 and succumbed to their injuries on April 18, 2023





Citations Issued

- Part 1
 - Rule 114(1) An employer shall develop, maintain, and coordinate with employees an accident prevention program, and it shall be available at the worksite
- Part 45
 - Rule 501 (b)(4)(i) Each employee shall be protected from falling through holes.
 - Rule 502(i)(2) Covers shall be capable of supporting at least twice the imposed weight.

Citations Issued

- Part 45
 - Rule 502(i)(4) All covers shall be color-coded or marked
 - Rule 503(a)(1) The employer shall provide a training program for each employee exposed to fall hazards.
 - Rule 503(b)(1) Certificate of Training

May 25, 2023 Struck By Ingham County

- On May 25, 2023, a 70-year-old traffic flagger was fatally hit by a car while regulating traffic at a road construction project.



Citations

No Citations Issued

**May 28, 2023
Fall
Lapeer County**

- On May 28, 2023, employees were performing painting operations at a manufacturing facility. An employee working nearby heard a noise and found the employee lying on the ground. The employee was transported to a nearby hospital and placed on life support. On May 30, 2023, the employee passed away.



Citations Issued

- Part 1
 - Rule 114(1) An employer shall develop, maintain, and coordinate with employees an accident prevention program, and it shall be available at the worksite
- Part 45
 - Rule 501(b)(1) Each employee on a walking/working surface with an unprotected side or edge that is 6 feet or more above a lower level shall be protected from falling.

June 15, 2023 Struck By Wayne County

- On June 15, 2023, a 33-year-old demolition laborer was demolishing a cooling tower located on the roof of a building with an angle grinder. The worker cut away one angle iron and was cutting a second angle when the cooling tower started to fall. The worker ran towards the cooling tower when it fell on them.



Citations

No Citations Issued

**Fall (from
elevation)
June 21st
Wayne County**

- On June 21, 2023, a 53-year-old laborer was performing fire-proofing activities to structural steel while wearing fall protection, but not physically tied-off to an anchorage point. During the work operation, the victim fell approximately 18 feet to the concrete below.



Citations Issued

- Part 32
 - Rule 3214(4): An employer shall not allow employees to exit an elevated aerial work platform.
- Part 45
 - Rule 501(b)(1) Each employee on a walking/working surface with an unprotected side or edge that is 6 feet or more above a lower level shall be protected from falling

June 24th, 2023 Electrocution Wayne County

Open

- An employee was performing maintenance operations to powerline(s). During the operation, the employee was electrocuted.

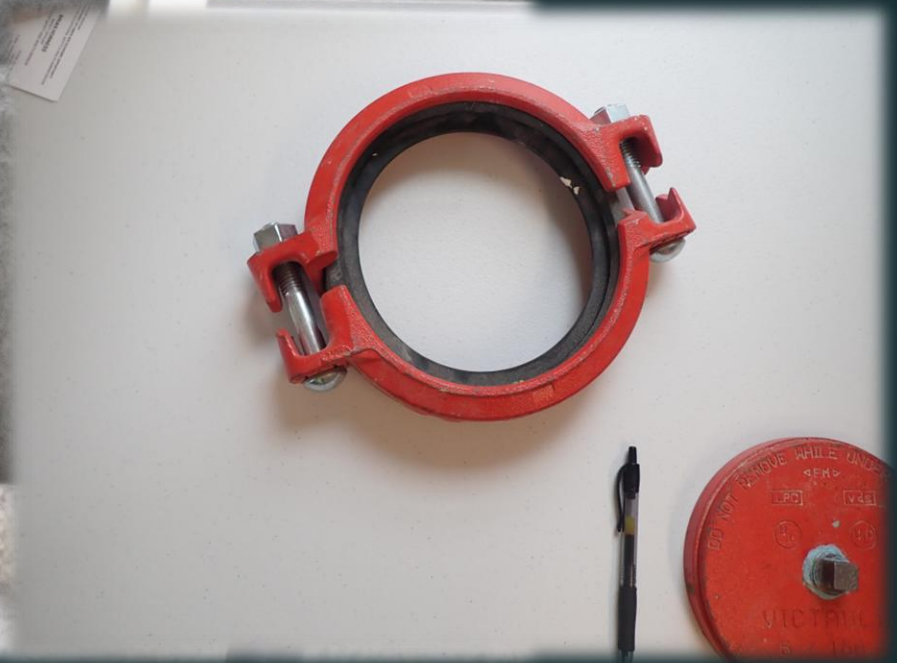
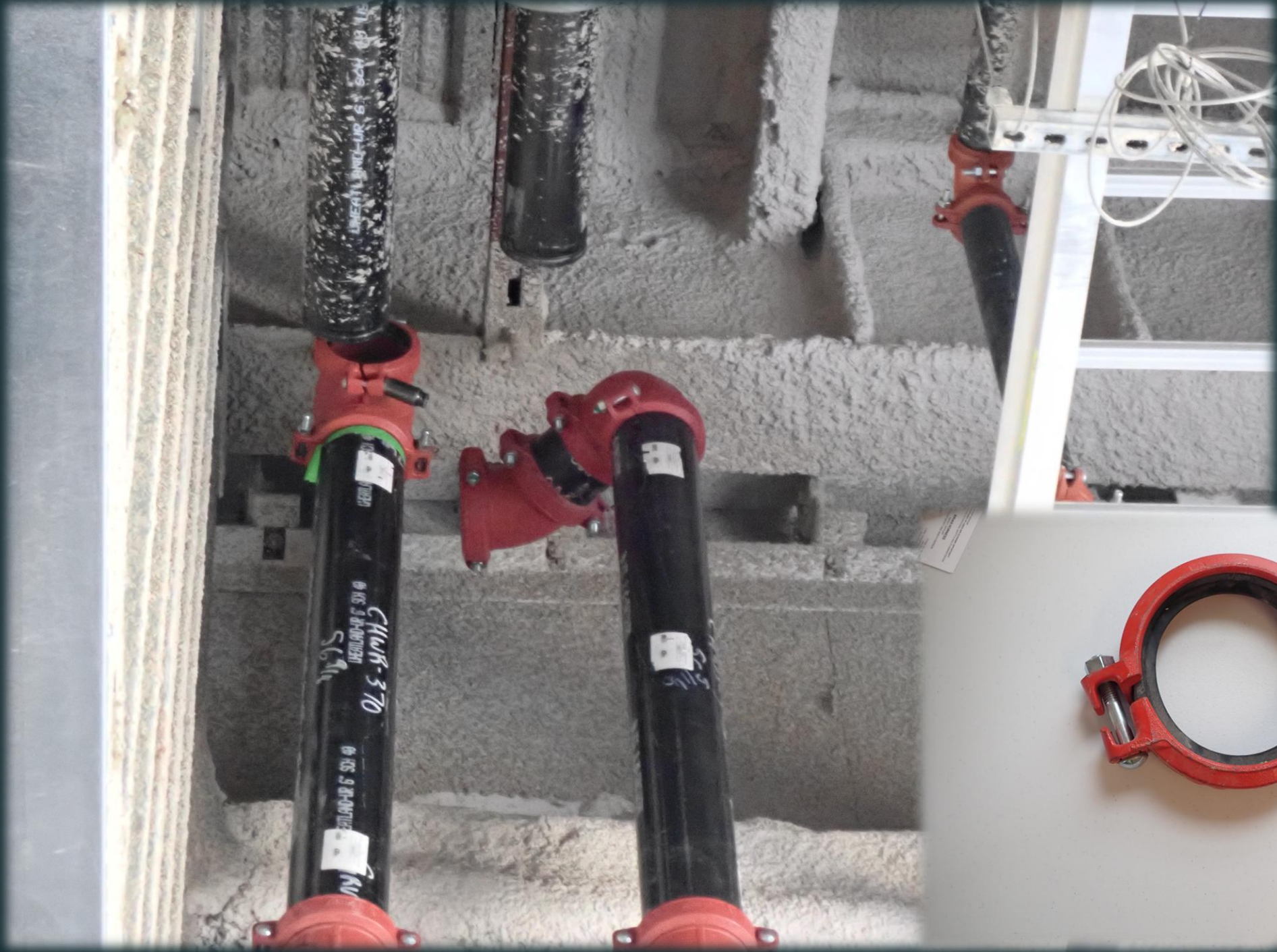
Open

Citations Issued

- Part 11 ADMIN
 - 22139(1): Reporting fatalities within 8 hours after the death of any employee from a work-related incident
- Part 16
 - 1926.960(b)(2): Treat as energized. Electric lines and equipment shall be considered and treated as energized.
 - 1926.960(c)(2)(ii)(B): The employer shall ensure that the employee does not remove the rubber insulating gloves until they are in a position where he or she cannot reach into the minimum approach distance.

September 15, 2023 Struck By Ottawa County

- On September 15, 2023, a 41-year-old pipefitter was pressure testing a pipe when a valve came off the pipe and struck him in the head. The victim was hospitalized and succumbed to his injuries on September 16, 2023.



Citations

No Citations Issued

Michigan Safety Conference

Visit the
MIOsha
Booth

#510 & #512

Enter for a Chance to Win!

Sign up by filling out this card
with your name and email address.

Name

Email Address



MIOsha Training Institute • CET Events • MIOsha News • MIOsha Standards • Radiation Safety

11/22

Drawing will be Wednesday (4/16) at 11am.
Must be present to win.

Thank you.

MIOSHA Consultation Education and Training Division

517.284.7720

